
Product Name: NCE2 Rabbit Monoclonal Antibody**Catalog #: AMRe87177**

For research use only.

Summary

Description	Recombinant rabbit monoclonal antibody
Host	Rabbit
Application	WB,IHC,ICC/IF,FC
Reactivity	Human
Conjugation	Unconjugated
Modification	Unmodified
Isotype	IgG
Clonality	Monoclonal
Form	Liquid
Concentration	
Storage	Aliquot and store at -20°C (valid for 12 months). Avoid freeze/thaw cycles.
Shipping	Ice bags
Buffer	Supplied in 50mM Tris-Glycine(pH 7.4), 0.15M NaCl, 40% Glycerol, 0.01% sodium azide and 0.05% protective protein. Stable for 12 months from date of receipt.
Purification	Affinity Purification

Application

Dilution Ratio	WB 1:500-1:2000,IHC 1:50-1:100,ICC/IF 1:100-1:200,FC 1:100-1:200
Molecular Weight	Calculated MW:21 kDa; Observed MW:21 kDa

Antigen Information

Gene Name	NCE2
Alternative Names	UBE2F
Gene ID	140739
SwissProt ID	Q969M7
Immunogen	Recombinant protein of human NCE2

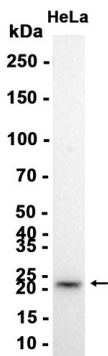
Background

Accepts the ubiquitin-like protein NEDD8 from the UBA3-NAE1 E1 complex and catalyzes its covalent attachment to other proteins. The specific interaction with the E3 ubiquitin ligase RBX2, but not RBX1, suggests that the RBX2-UBE2F complex

neddylates specific target proteins, such as CUL5.

Research Area

Image Data



Western blot analysis of extracts from HeLa cells using NCE2 Rabbit Monoclonal Antibody at 1:1000.