

Product Name: Caspase-6 Rabbit Monoclonal Antibody**Catalog #: AMRe87166**

For research use only.

Summary

Description	Recombinant rabbit monoclonal antibody
Host	Rabbit
Application	WB,IHC,ICC/IF,IP
Reactivity	Human,Mouse,Rat
Conjugation	Unconjugated
Modification	Unmodified
Isotype	IgG
Clonality	Monoclonal
Form	Liquid
Concentration	
Storage	Aliquot and store at -20°C (valid for 12 months). Avoid freeze/thaw cycles.
Shipping	Ice bags
Buffer	Supplied in 50mM Tris-Glycine(pH 7.4), 0.15M NaCl, 40% Glycerol, 0.01% sodium azide and 0.05% protective protein. Stable for 12 months from date of receipt.
Purification	Affinity Purification

Application

Dilution Ratio	WB 1:500-1:2000,IHC 1:200-1:1000,ICC/IF 1:200-1:500,IP 1:50-1:100
Molecular Weight	Calculated MW:33 kDa; Observed MW:11kDa(cleavage),33 kDa

Antigen Information

Gene Name	Caspase-6
Alternative Names	MCH2
Gene ID	839
SwissProt ID	P55212
Immunogen	A synthetic peptide of human Caspase-6

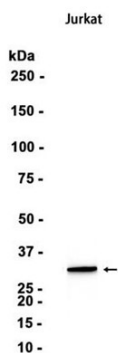
Background

This gene encodes a member of the cysteine-aspartic acid protease (caspase) family of enzymes. Sequential activation of caspases plays a central role in the execution-phase of cell apoptosis. Caspases exist as inactive proenzymes which undergo

proteolytic processing at conserved aspartic acid residues to produce two subunits, large and small, that dimerize to form the active enzyme. This protein is processed by caspases 7, 8 and 10, and is thought to function as a downstream enzyme in the caspase activation cascade. Alternative splicing of this gene results in multiple transcript variants that encode different isoforms. [provided by RefSeq, Oct 2015]

Research Area

Image Data



Western blot analysis of extracts from Jurkat cells using Caspase-6 Rabbit Monoclonal Antibody at 1:1000.