
Product Name: Dopamine Receptor D3/DRD3 Rabbit Monoclonal Antibody**Catalog #: AMRe87159**

For research use only.

Summary

Description	Recombinant rabbit monoclonal antibody
Host	Rabbit
Application	WB
Reactivity	Human, Mouse, Rat
Conjugation	Unconjugated
Modification	Unmodified
Isotype	IgG
Clonality	Monoclonal
Form	Liquid
Concentration	
Storage	Aliquot and store at -20°C (valid for 12 months). Avoid freeze/thaw cycles.
Shipping	Ice bags
Buffer	Supplied in 50mM Tris-Glycine(pH 7.4), 0.15M NaCl, 40% Glycerol, 0.01% sodium azide and 0.05% protective protein. Stable for 12 months from date of receipt.
Purification	Affinity Purification

Application

Dilution Ratio	WB 1:1000-1:5000
Molecular Weight	Calculated MW:44 kDa; Observed MW:44 kDa

Antigen Information

Gene Name	Dopamine Receptor D3/DRD3
Alternative Names	D3DR; ETM1; FET1
Gene ID	1814
SwissProt ID	P35462
Immunogen	A synthetic peptide of human Dopamine Receptor D3/DRD3

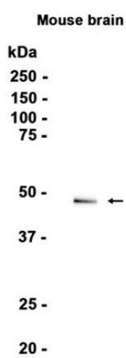
Background

This gene encodes the D3 subtype of the five (D1-D5) dopamine receptors. The activity of the D3 subtype receptor is mediated by G proteins which inhibit adenylyl cyclase. This receptor is localized to the limbic areas of the brain, which are associated with

cognitive, emotional, and endocrine functions. Genetic variation in this gene may be associated with susceptibility to hereditary essential tremor 1. Alternative splicing of this gene results in transcript variants encoding different isoforms, although some variants may be subject to nonsense-mediated decay (NMD). [provided by RefSeq, Jul 2008]

Research Area

Image Data



Western blot analysis of extracts from Mouse brain tissue using Dopamine Receptor D3/DRD3 Rabbit Monoclonal Antibody at 1:1000.