

Product Name: CKS2 Rabbit Monoclonal Antibody**Catalog #: AMRe87152**

For research use only.

Summary

Description	Recombinant rabbit monoclonal antibody
Host	Rabbit
Application	WB,IHC
Reactivity	Human,Mouse,Rat
Conjugation	Unconjugated
Modification	Unmodified
Isotype	IgG
Clonality	Monoclonal
Form	Liquid
Concentration	
Storage	Aliquot and store at -20°C (valid for 12 months). Avoid freeze/thaw cycles.
Shipping	Ice bags
Buffer	Supplied in 50mM Tris-Glycine(pH 7.4), 0.15M NaCl, 40% Glycerol, 0.01% sodium azide and 0.05% protective protein. Stable for 12 months from date of receipt.
Purification	Affinity Purification

Application

Dilution Ratio	WB 1:1000-1:5000,IHC 1:50-1:100
Molecular Weight	Calculated MW:10 kDa; Observed MW:10 kDa

Antigen Information

Gene Name	CKS2
Alternative Names	CKSHS2
Gene ID	1164
SwissProt ID	P33552
Immunogen	A synthetic peptide of human CKS2

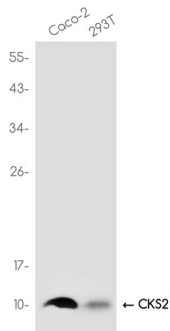
Background

CKS2 protein binds to the catalytic subunit of the cyclin dependent kinases and is essential for their biological function. The CKS2 mRNA is found to be expressed in different patterns through the cell cycle in HeLa cells, which reflects specialized role for

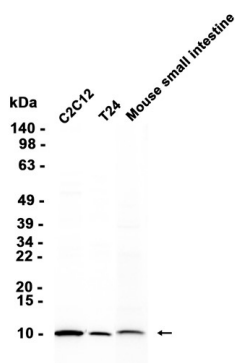
the encoded protein. [provided by RefSeq, Jul 2008]

Research Area

Image Data



Western blot analysis of extracts from Caco-2, 293T cells using CKS2 Rabbit Monoclonal Antibody at 1:1000.



Western blot analysis of extracts from T24, C2C12 cells and Mouse small intestine tissue using AMRe87152 at 1:1000.