
Product Name: Phospho-Smad3 (Ser423/Ser425) Rabbit Monoclonal Antibody**Catalog #: AMRe87151**

For research use only.

Summary

| | |
|----------------------|--|
| Description | Recombinant rabbit monoclonal antibody |
| Host | Rabbit |
| Application | WB,IHC,ICC/IF |
| Reactivity | Human,Mouse |
| Conjugation | Unconjugated |
| Modification | Phosphorylated |
| Isotype | IgG |
| Clonality | Monoclonal |
| Form | Liquid |
| Concentration | 0.5mg/ml. The concentration of this product may be batch-dependent. |
| Storage | Aliquot and store at -20°C (valid for 12 months). Avoid freeze/thaw cycles. |
| Shipping | Ice bags |
| Buffer | Supplied in 50mM Tris-Glycine(pH 7.4), 0.15M NaCl, 40% Glycerol, 0.01% sodium azide and 0.05% protective protein. Stable for 12 months from date of receipt. |
| Purification | Affinity Purification |

Application

| | |
|-------------------------|--|
| Dilution Ratio | WB 1:500-1:2000,IHC 1:100-1:200,ICC/IF 1:100-1:200 |
| Molecular Weight | Calculated MW:48 kDa; Observed MW:52 kDa |

Antigen Information

| | |
|--------------------------|---|
| Gene Name | Phospho-Smad3 |
| Alternative Names | LDS3; LDS1C; MADH3; JV15-2; HSPC193; HsT17436 |
| Gene ID | 4088 |
| SwissProt ID | P84022 |
| Immunogen | A synthetic phosphopeptide corresponding to residues surrounding Ser423/Ser425 of human Smad3 |

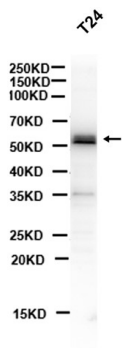
Background

The protein encoded by this gene belongs to the SMAD, a family of proteins similar to the gene products of the Drosophila

gene 'mothers against decapentaplegic' (Mad) and the *C. elegans* gene Sma. SMAD proteins are signal transducers and transcriptional modulators that mediate multiple signaling pathways. This protein functions as a transcriptional modulator activated by transforming growth factor-beta and is thought to play a role in the regulation of carcinogenesis. [provided by RefSeq, Apr 2009]

Research Area

Image Data



Western blot analysis of extracts from T24 cells using Phospho-Smad3 (Ser423/Ser425) Rabbit Monoclonal Antibody at 1:1000.