
Product Name: BANK1 Rabbit Monoclonal Antibody**Catalog #: AMRe87142**

For research use only.

Summary

Description	Recombinant rabbit monoclonal antibody
Host	Rabbit
Application	WB,IHC,FC
Reactivity	Human,Mouse,Rat
Conjugation	Unconjugated
Modification	Unmodified
Isotype	IgG
Clonality	Monoclonal
Form	Liquid
Concentration	
Storage	Aliquot and store at -20°C (valid for 12 months). Avoid freeze/thaw cycles.
Shipping	Ice bags
Buffer	Supplied in 50mM Tris-Glycine(pH 7.4), 0.15M NaCl, 40% Glycerol, 0.01% sodium azide and 0.05% protective protein. Stable for 12 months from date of receipt.
Purification	Affinity Purification

Application

Dilution Ratio	WB 1:500-1:2000,IHC 1:200-1:500,FC 1:200-1:500
Molecular Weight	Calculated MW:89 kDa; Observed MW:100 kDa

Antigen Information

Gene Name	BANK1
Alternative Names	BANK
Gene ID	55024
SwissProt ID	Q8NDB2
Immunogen	Recombinant protein of human BANK1

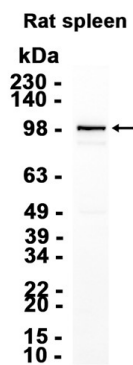
Background

The protein encoded by this gene is a B-cell-specific scaffold protein that functions in B-cell receptor-induced calcium mobilization from intracellular stores. This protein can also promote Lyn-mediated tyrosine phosphorylation of inositol 1,4,5-

triphosphate receptors. Polymorphisms in this gene are associated with susceptibility to systemic lupus erythematosus. Alternative splicing results in multiple transcript variants. [provided by RefSeq, Oct 2009]

Research Area

Image Data



Western blot analysis of extracts from Rat spleen tissue using BANK1 Rabbit Monoclonal Antibody at 1:1000.