

---

**Product Name: Lyn Rabbit Monoclonal Antibody****Catalog #: AMRe87140**

For research use only.

**Summary**

<b>Description</b>	Recombinant rabbit monoclonal antibody
<b>Host</b>	Rabbit
<b>Application</b>	WB
<b>Reactivity</b>	Human, Mouse, Rat
<b>Conjugation</b>	Unconjugated
<b>Modification</b>	Unmodified
<b>Isotype</b>	IgG
<b>Clonality</b>	Monoclonal
<b>Form</b>	Liquid
<b>Concentration</b>	
<b>Storage</b>	Aliquot and store at -20°C (valid for 12 months). Avoid freeze/thaw cycles.
<b>Shipping</b>	Ice bags
<b>Buffer</b>	Supplied in 50mM Tris-Glycine(pH 7.4), 0.15M NaCl, 40% Glycerol, 0.01% sodium azide and 0.05% protective protein. Stable for 12 months from date of receipt.
<b>Purification</b>	Affinity Purification

**Application**

<b>Dilution Ratio</b>	WB 1:500-1:2000
<b>Molecular Weight</b>	Calculated MW:59 kDa; Observed MW:59 kDa

**Antigen Information**

<b>Gene Name</b>	Lyn
<b>Alternative Names</b>	JTK8; p53Lyn; p56Lyn
<b>Gene ID</b>	4067
<b>SwissProt ID</b>	P07948
<b>Immunogen</b>	A synthetic peptide of human Lyn

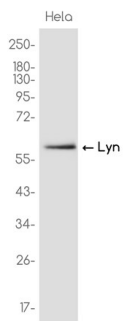
**Background**

This gene encodes a tyrosine protein kinase, which maybe involved in the regulation of mast cell degranulation, and erythroid differentiation. Alternatively spliced transcript variants encoding different isoforms have been found for this gene. [provided by

RefSeq, Jul 2011]

## Research Area

## Image Data



Western blot analysis of extracts from HeLa cells using Lyn Rabbit Monoclonal Antibody at 1:1000.