
Product Name: IP3 receptor Rabbit Monoclonal Antibody**Catalog #: AMRe87138**

For research use only.

Summary

Description	Recombinant rabbit monoclonal antibody
Host	Rabbit
Application	WB,IHC,IP
Reactivity	Human,Mouse,Rat
Conjugation	Unconjugated
Modification	Unmodified
Isotype	IgG
Clonality	Monoclonal
Form	Liquid
Concentration	
Storage	Aliquot and store at -20°C (valid for 12 months). Avoid freeze/thaw cycles.
Shipping	Ice bags
Buffer	Supplied in 50mM Tris-Glycine(pH 7.4), 0.15M NaCl, 40% Glycerol, 0.01% sodium azide and 0.05% protective protein. Stable for 12 months from date of receipt.
Purification	Affinity Purification

Application

Dilution Ratio	WB 1:1000-1:5000,IHC 1:200-1:1000,IP 1:20-1:50
Molecular Weight	Calculated MW:314 kDa; Observed MW:314 kDa

Antigen Information

Gene Name	IP3 receptor
Alternative Names	ACV; CLA4; IP3R; IP3R1; SCA15; SCA16; SCA29; INSP3R1; PPP1R94
Gene ID	3708
SwissProt ID	Q14643
Immunogen	A synthetic peptide of human IP3 receptor

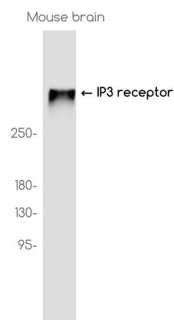
Background

This gene encodes an intracellular receptor for inositol 1,4,5-trisphosphate. Upon stimulation by inositol 1,4,5-trisphosphate, this receptor mediates calcium release from the endoplasmic reticulum. Mutations in this gene cause spinocerebellar ataxia

type 15, a disease associated with an heterogeneous group of cerebellar disorders. Multiple transcript variants have been identified for this gene. [provided by RefSeq, Nov 2009]

Research Area

Image Data



Western blot analysis of extracts from Mouse brain tissue using IP3 receptor Rabbit Monoclonal Antibody at 1:1000.