
Product Name: Ferritin Heavy Chain Rabbit Monoclonal Antibody**Catalog #: AMRe87137**

For research use only.

Summary

| | |
|----------------------|--|
| Description | Recombinant rabbit monoclonal antibody |
| Host | Rabbit |
| Application | WB,IHC |
| Reactivity | Mouse,Rat |
| Conjugation | Unconjugated |
| Modification | Unmodified |
| Isotype | IgG |
| Clonality | Monoclonal |
| Form | Liquid |
| Concentration | |
| Storage | Aliquot and store at -20°C (valid for 12 months). Avoid freeze/thaw cycles. |
| Shipping | Ice bags |
| Buffer | Supplied in 50mM Tris-Glycine(pH 7.4), 0.15M NaCl, 40% Glycerol, 0.01% sodium azide and 0.05% protective protein. Stable for 12 months from date of receipt. |
| Purification | Affinity Purification |

Application

| | |
|-------------------------|--|
| Dilution Ratio | WB 1:500-1:2000,IHC 1:100-1:200 |
| Molecular Weight | Calculated MW:21 kDa; Observed MW:21 kDa |

Antigen Information

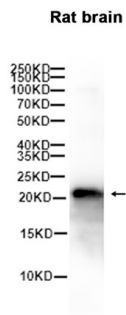
| | |
|--------------------------|---|
| Gene Name | Ferritin Heavy Chain |
| Alternative Names | FHC; Fth; HFt; MFH |
| Gene ID | 14319 |
| SwissProt ID | P09528 |
| Immunogen | A synthetic peptide of mouse Ferritin Heavy Chain |

Background

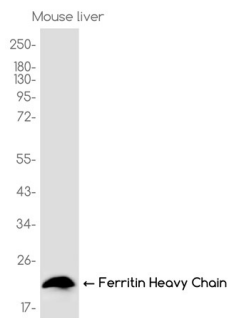
Stores iron in a soluble, non-toxic, readily available form

Research Area

Image Data



Western blot analysis of extracts from Rat brain tissue using Ferritin Heavy Chain Rabbit Monoclonal Antibody at 1:1000.



Western blot analysis of extracts from Mouse liver tissue using AMRe87137 at 1:1000.