

**Product Name: Annexin A1/ANXA1 Rabbit Monoclonal Antibody****Catalog #: AMRe87135**

For research use only.

**Summary**

<b>Description</b>	Recombinant rabbit monoclonal antibody
<b>Host</b>	Rabbit
<b>Application</b>	WB
<b>Reactivity</b>	Human, Mouse, Rat
<b>Conjugation</b>	Unconjugated
<b>Modification</b>	Unmodified
<b>Isotype</b>	IgG
<b>Clonality</b>	Monoclonal
<b>Form</b>	Liquid
<b>Concentration</b>	
<b>Storage</b>	Aliquot and store at -20°C (valid for 12 months). Avoid freeze/thaw cycles.
<b>Shipping</b>	Ice bags
<b>Buffer</b>	Supplied in 50mM Tris-Glycine(pH 7.4), 0.15M NaCl, 40% Glycerol, 0.01% sodium azide and 0.05% protective protein. Stable for 12 months from date of receipt.
<b>Purification</b>	Affinity Purification

**Application**

<b>Dilution Ratio</b>	WB 1:1000-1:5000
<b>Molecular Weight</b>	Calculated MW:39 kDa; Observed MW:39 kDa

**Antigen Information**

<b>Gene Name</b>	Annexin A1/ANXA1
<b>Alternative Names</b>	ANX1; LPC1
<b>Gene ID</b>	301
<b>SwissProt ID</b>	P04083
<b>Immunogen</b>	A synthetic peptide of human Annexin A1/ANXA1

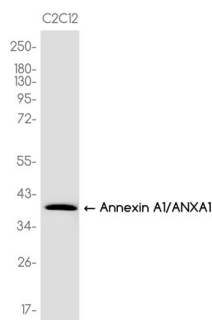
**Background**

This gene encodes a membrane-localized protein that binds phospholipids. This protein inhibits phospholipase A2 and has anti-inflammatory activity. Loss of function or expression of this gene has been detected in multiple tumors. [provided by

RefSeq, Dec 2014]

## Research Area

## Image Data



Western blot analysis of extracts from C2C12 cells using Annexin A1/ANXA1 Rabbit Monoclonal Antibody at 1:1000.