
Product Name: Integrin beta 3 Rabbit Monoclonal Antibody**Catalog #: AMRe87131**

For research use only.

Summary

Description	Recombinant rabbit monoclonal antibody
Host	Rabbit
Application	WB,FC,IP
Reactivity	Human,Mouse,Rat
Conjugation	Unconjugated
Modification	Unmodified
Isotype	IgG
Clonality	Monoclonal
Form	Liquid
Concentration	
Storage	Aliquot and store at -20°C (valid for 12 months). Avoid freeze/thaw cycles.
Shipping	Ice bags
Buffer	Supplied in 50mM Tris-Glycine(pH 7.4), 0.15M NaCl, 40% Glycerol, 0.01% sodium azide and 0.05% protective protein. Stable for 12 months from date of receipt.
Purification	Affinity Purification

Application

Dilution Ratio	WB 1:500-1:2000,FC 1:20-1:50,IP 1:20-1:50
Molecular Weight	Calculated MW:87 kDa; Observed MW:100 kDa

Antigen Information

Gene Name	Integrin beta 3
Alternative Names	GT; CD61; GP3A; BDPLT2; GPIIIa; BDPLT16
Gene ID	3690
SwissProt ID	P05106
Immunogen	A synthetic peptide of human Integrin beta 3

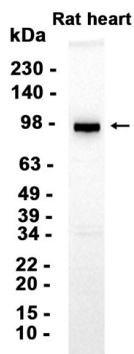
Background

The ITGB3 protein product is the integrin beta chain beta 3. Integrins are integral cell-surface proteins composed of an alpha chain and a beta chain. A given chain may combine with multiple partners resulting in different integrins. Integrin beta 3 is

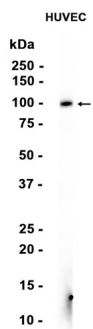
found along with the alpha IIb chain in platelets. Integrins are known to participate in cell adhesion as well as cell-surface mediated signalling. [provided by RefSeq, Jul 2008]

Research Area

Image Data



Western blot analysis of extracts from Rat heart tissue using Integrin beta 3 Rabbit Monoclonal Antibody at 1:1000.



Western blot analysis of extracts from HUVEC cells using AMRe87131 at 1:1000.