
Product Name: RASSF1 Rabbit Monoclonal Antibody**Catalog #: AMRe87125**

For research use only.

Summary

Description	Recombinant rabbit monoclonal antibody
Host	Rabbit
Application	WB,IHC
Reactivity	Human
Conjugation	Unconjugated
Modification	Unmodified
Isotype	IgG
Clonality	Monoclonal
Form	Liquid
Concentration	
Storage	Aliquot and store at -20°C (valid for 12 months). Avoid freeze/thaw cycles.
Shipping	Ice bags
Buffer	Supplied in 50mM Tris-Glycine(pH 7.4), 0.15M NaCl, 40% Glycerol, 0.01% sodium azide and 0.05% protective protein. Stable for 12 months from date of receipt.
Purification	Affinity Purification

Application

Dilution Ratio	WB 1:1000-1:5000,IHC 1:50-1:100
Molecular Weight	Calculated MW:39 kDa; Observed MW:39 kDa

Antigen Information

Gene Name	RASSF1
Alternative Names	123F2; RDA32; NORE2A; RASSF1A; REH3P21
Gene ID	11186
SwissProt ID	Q9NS23
Immunogen	A synthetic peptide of human RASSF1

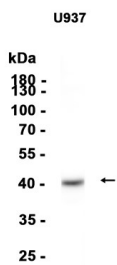
Background

This gene encodes a protein similar to the RAS effector proteins. Loss or altered expression of this gene has been associated with the pathogenesis of a variety of cancers, which suggests the tumor suppressor function of this gene. The inactivation of

this gene was found to be correlated with the hypermethylation of its CpG-island promoter region. The encoded protein was found to interact with DNA repair protein XPA. The protein was also shown to inhibit the accumulation of cyclin D1, and thus induce cell cycle arrest. Several alternatively spliced transcript variants of this gene encoding distinct isoforms have been reported. [provided by RefSeq, May 2011]

Research Area

Image Data



Western blot analysis of extracts from U937 cells using RASSF1 Rabbit Monoclonal Antibody at 1:1000.