

---

**Product Name:** Phospho-TGF beta Receptor II (Ser225) Rabbit Monoclonal Antibody  
**Catalog #:** AMRe87119

For research use only.

## Summary

<b>Description</b>	Recombinant rabbit monoclonal antibody
<b>Host</b>	Rabbit
<b>Application</b>	WB
<b>Reactivity</b>	Human
<b>Conjugation</b>	Unconjugated
<b>Modification</b>	Phosphorylated
<b>Isotype</b>	IgG
<b>Clonality</b>	Monoclonal
<b>Form</b>	Liquid
<b>Concentration</b>	0.5mg/ml. The concentration of this product may be batch-dependent.
<b>Storage</b>	Aliquot and store at -20°C (valid for 12 months). Avoid freeze/thaw cycles.
<b>Shipping</b>	Ice bags
<b>Buffer</b>	Supplied in 50mM Tris-Glycine(pH 7.4), 0.15M NaCl, 40% Glycerol, 0.01% sodium azide and 0.05% protective protein. Stable for 12 months from date of receipt.
<b>Purification</b>	Affinity Purification

## Application

<b>Dilution Ratio</b>	WB 1:1000-1:5000
<b>Molecular Weight</b>	Calculated MW:65 kDa; Observed MW:85 kDa

## Antigen Information

<b>Gene Name</b>	Phospho-TGF beta Receptor II
<b>Alternative Names</b>	AAT3; FAA3; LDS2; MFS2; RIIC; LDS1B; LDS2B; TAAD2; TGFR-2; TGFbeta-RII
<b>Gene ID</b>	7048
<b>SwissProt ID</b>	P37173
<b>Immunogen</b>	A synthetic phosphopeptide corresponding to residues surrounding Ser225 of human TGF beta Receptor II

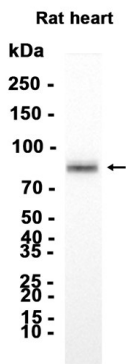
## Background

The protein encoded by this gene is a transmembrane protein that has a protein kinase domain, forms a heterodimeric complex

with TGF-beta receptor type-1, and binds TGF-beta. This receptor/ligand complex phosphorylates proteins, which then enter the nucleus and regulate the transcription of genes related to cell proliferation, cell cycle arrest, wound healing, immunosuppression, and tumorigenesis. Mutations in this gene have been associated with Marfan Syndrome, Loeys-Deitz Aortic Aneurysm Syndrome, and the development of various types of tumors. Alternatively spliced transcript variants encoding different isoforms have been characterized. [provided by RefSeq, Aug 2017]

## Research Area

## Image Data



Western blot analysis of extracts from Rat heart tissue using Phospho-TGF beta Receptor II (Ser225) Rabbit Monoclonal Antibody at 1:2000.