

---

**Product Name: REEP2 Rabbit Monoclonal Antibody****Catalog #: AMRe87111**

For research use only.

**Summary**

<b>Description</b>	Recombinant rabbit monoclonal antibody
<b>Host</b>	Rabbit
<b>Application</b>	WB
<b>Reactivity</b>	Human
<b>Conjugation</b>	Unconjugated
<b>Modification</b>	Unmodified
<b>Isotype</b>	IgG
<b>Clonality</b>	Monoclonal
<b>Form</b>	Liquid
<b>Concentration</b>	
<b>Storage</b>	Aliquot and store at -20°C (valid for 12 months). Avoid freeze/thaw cycles.
<b>Shipping</b>	Ice bags
<b>Buffer</b>	Supplied in 50mM Tris-Glycine(pH 7.4), 0.15M NaCl, 40% Glycerol, 0.01% sodium azide and 0.05% protective protein. Stable for 12 months from date of receipt.
<b>Purification</b>	Affinity Purification

**Application**

<b>Dilution Ratio</b>	WB 1:1000-1:5000
<b>Molecular Weight</b>	Calculated MW:28 kDa; Observed MW:28 kDa

**Antigen Information**

<b>Gene Name</b>	REEP2
<b>Alternative Names</b>	SPG72; Yip2d; C5orf19; SGC32445
<b>Gene ID</b>	51308
<b>SwissProt ID</b>	Q9BRK0
<b>Immunogen</b>	A synthetic peptide of human REEP2

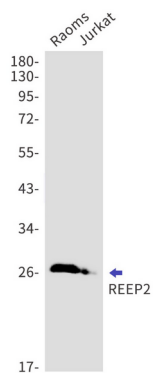
**Background**

This gene encodes a member of the receptor expression enhancing protein family. Studies of a related gene in mouse suggest that the encoded protein is found in the cell membrane and enhances the function of sweet taste receptors. Alternative splicing

results in multiple transcript variants. [provided by RefSeq, Nov 2012]

## Research Area

## Image Data



Western blot detection of REEP2 in Raoms, Jurkat cell lysates using REEP2 antibody (1:1000 diluted).