

**Product Name: POLR1C Rabbit Monoclonal Antibody****Catalog #: AMRe87104**

For research use only.

**Summary**

<b>Description</b>	Recombinant rabbit monoclonal antibody
<b>Host</b>	Rabbit
<b>Application</b>	WB
<b>Reactivity</b>	Human, Mouse, Rat
<b>Conjugation</b>	Unconjugated
<b>Modification</b>	Unmodified
<b>Isotype</b>	IgG
<b>Clonality</b>	Monoclonal
<b>Form</b>	Liquid
<b>Concentration</b>	
<b>Storage</b>	Aliquot and store at -20°C (valid for 12 months). Avoid freeze/thaw cycles.
<b>Shipping</b>	Ice bags
<b>Buffer</b>	Supplied in 50mM Tris-Glycine(pH 7.4), 0.15M NaCl, 40% Glycerol, 0.01% sodium azide and 0.05% protective protein. Stable for 12 months from date of receipt.
<b>Purification</b>	Affinity Purification

**Application**

<b>Dilution Ratio</b>	WB 1:1000-1:5000
<b>Molecular Weight</b>	Calculated MW:39 kDa; Observed MW:39 kDa

**Antigen Information**

<b>Gene Name</b>	POLR1C
<b>Alternative Names</b>	AC40; RPA5; TCS3; HLD11; RPA39; RPA40; RPAC1; RPC40
<b>Gene ID</b>	9533
<b>SwissProt ID</b>	O15160
<b>Immunogen</b>	Recombinant protein of human POLR1C

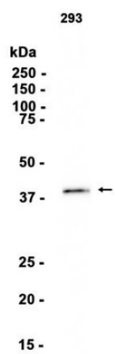
**Background**

The protein encoded by this gene is a subunit of both RNA polymerase I and RNA polymerase III complexes. The encoded protein is part of the Pol core element. Mutations in this gene have been associated with Treacher Collins syndrome (TCS) and

hypomyelinating leukodystrophy 11. Alternative splicing results in multiple transcript variants. [provided by RefSeq, Jan 2016]

## Research Area

## Image Data



Western blot analysis of extracts from 293 cells using POLR1C Rabbit Monoclonal Antibody at 1:1000.