
Product Name: Phospho-EEF2 (Thr56/Thr58) Rabbit Monoclonal Antibody**Catalog #: AMRe87101**

For research use only.

Summary

Description	Recombinant rabbit monoclonal antibody
Host	Rabbit
Application	WB
Reactivity	Human, Mouse, Rat
Conjugation	Unconjugated
Modification	Phosphorylated
Isotype	IgG
Clonality	Monoclonal
Form	Liquid
Concentration	0.5mg/ml. The concentration of this product may be batch-dependent.
Storage	Aliquot and store at -20°C (valid for 12 months). Avoid freeze/thaw cycles.
Shipping	Ice bags
Buffer	Supplied in 50mM Tris-Glycine(pH 7.4), 0.15M NaCl, 40% Glycerol, 0.01% sodium azide and 0.05% protective protein. Stable for 12 months from date of receipt.
Purification	Affinity Purification

Application

Dilution Ratio	WB 1:500-1:2000
Molecular Weight	Calculated MW:95 kDa; Observed MW:95 kDa

Antigen Information

Gene Name	Phospho-EEF2 (Thr56/Thr58)
Alternative Names	EF2; EF-2; EEF-2; SCA26
Gene ID	1938
SwissProt ID	P13639
Immunogen	A synthetic phosphopeptide corresponding to residues surrounding Thr56/Thr58 of human EEF2/Elongation factor 2

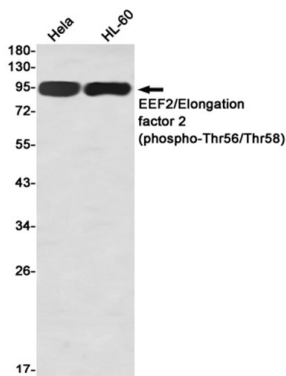
Background

This gene encodes a member of the GTP-binding translation elongation factor family. This protein is an essential factor for

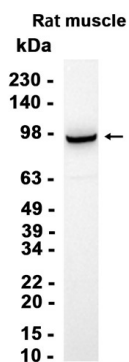
protein synthesis. It promotes the GTP-dependent translocation of the nascent protein chain from the A-site to the P-site of the ribosome. This protein is completely inactivated by EF-2 kinase phosphorylation. [provided by RefSeq, Jul 2008]

Research Area

Image Data



Western blot detection of EEF2/Elongation factor 2 (phospho-Thr56/Thr58) in HeLa,HL-60 using EEF2/Elongation factor 2 (phospho-Thr56/Thr58) antibody(1:1000 diluted)



Western blot analysis of extracts from Rat muscle tissue using AMRe87101 at 1:1000.