

---

**Product Name: SAMHD1 Rabbit Monoclonal Antibody****Catalog #: AMRe87084**

For research use only.

**Summary**

|                      |  |
|----------------------|--|
| <b>Description</b>   | Recombinant rabbit monoclonal antibody   |
| <b>Host</b>          | Rabbit   |
| <b>Application</b>   | WB,IHC,ICC/IF,FC   |
| <b>Reactivity</b>    | Human  |
| <b>Conjugation</b>   | Unconjugated   |
| <b>Modification</b>  | Unmodified   |
| <b>Isotype</b>       | IgG  |
| <b>Clonality</b>     | Monoclonal   |
| <b>Form</b>          | Liquid   |
| <b>Concentration</b> |  |
| <b>Storage</b>       | Aliquot and store at -20°C (valid for 12 months). Avoid freeze/thaw cycles.  |
| <b>Shipping</b>      | Ice bags   |
| <b>Buffer</b>        | Supplied in 50mM Tris-Glycine(pH 7.4), 0.15M NaCl, 40% Glycerol, 0.01% sodium azide and 0.05% protective protein. Stable for 12 months from date of receipt. |
| <b>Purification</b>  | Affinity Purification  |

**Application**

|                         |  |
|-------------------------|--|
| <b>Dilution Ratio</b>   | WB 1:2000-1:20000,IHC 1:100-1:200,ICC/IF 1:100-1:200,FC 1:10-1:100 |
| <b>Molecular Weight</b> | Calculated MW:72 kDa; Observed MW:72 kDa                           |

**Antigen Information**

|                          |                                     |
|--------------------------|-------------------------------------|
| <b>Gene Name</b>         | SAMHD1                              |
| <b>Alternative Names</b> | DCIP; CHBL2; HDDC1; MOP-5; SBBI88   |
| <b>Gene ID</b>           | 25939                               |
| <b>SwissProt ID</b>      | Q9Y3Z3                              |
| <b>Immunogen</b>         | A synthetic peptide of human SAMHD1 |

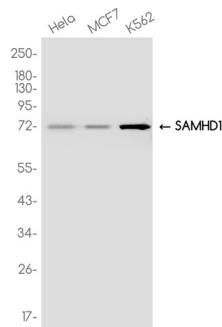
**Background**

This gene may play a role in regulation of the innate immune response. The encoded protein is upregulated in response to viral infection and may be involved in mediation of tumor necrosis factor-alpha proinflammatory responses. Mutations in this gene

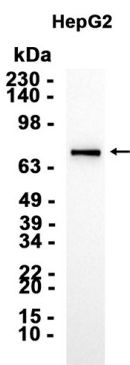
have been associated with Aicardi-Goutieres syndrome. [provided by RefSeq, Mar 2010]

## Research Area

## Image Data



Western blot analysis of extracts from HeLa, MCF-7, K562 cells using SAMHD1 Rabbit Monoclonal Antibody at 1:1000.



Western blot analysis of extracts from HepG2 cells using AMRe87084 at 1:5000.