
Product Name: GBF1 Rabbit Monoclonal Antibody**Catalog #: AMRe87081**

For research use only.

Summary

Description	Recombinant rabbit monoclonal antibody
Host	Rabbit
Application	WB,IHC,ICC/IF,FC
Reactivity	Human,Mouse,Rat
Conjugation	Unconjugated
Modification	Unmodified
Isotype	IgG
Clonality	Monoclonal
Form	Liquid
Concentration	
Storage	Aliquot and store at -20°C (valid for 12 months). Avoid freeze/thaw cycles.
Shipping	Ice bags
Buffer	Supplied in 50mM Tris-Glycine(pH 7.4), 0.15M NaCl, 40% Glycerol, 0.01% sodium azide and 0.05% protective protein. Stable for 12 months from date of receipt.
Purification	Affinity Purification

Application

Dilution Ratio	WB 1:2000-1:20000,IHC 1:50-1:100,ICC/IF 1:200-1:500,FC 1:100-1:200
Molecular Weight	Calculated MW:207 kDa; Observed MW:250 kDa

Antigen Information

Gene Name	GBF1
Alternative Names	ARF1GEF
Gene ID	8729
SwissProt ID	Q92538
Immunogen	A synthetic peptide of human GBF1

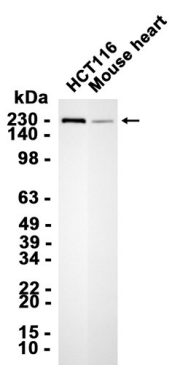
Background

This gene encodes a member of the Sec7 domain family. The encoded protein is a guanine nucleotide exchange factor that regulates the recruitment of proteins to membranes by mediating GDP to GTP exchange. The encoded protein is localized to

the Golgi apparatus and plays a role in vesicular trafficking by activating ADP ribosylation factor 1. The encoded protein has also been identified as an important host factor for viral replication. Multiple transcript variants have been observed for this gene. [provided by RefSeq, Dec 2010]

Research Area

Image Data



Western blot analysis of extracts from HCT116 cells and Mouse heart tissue using GBF1 Rabbit Monoclonal Antibody at 1:5000.