

---

**Product Name: Mannan Binding Lectin Rabbit Monoclonal Antibody****Catalog #: AMRe87077**

For research use only.

**Summary**

<b>Description</b>	Recombinant rabbit monoclonal antibody
<b>Host</b>	Rabbit
<b>Application</b>	WB,IHC
<b>Reactivity</b>	Human,Mouse
<b>Conjugation</b>	Unconjugated
<b>Modification</b>	Unmodified
<b>Isotype</b>	IgG
<b>Clonality</b>	Monoclonal
<b>Form</b>	Liquid
<b>Concentration</b>	0.5mg/ml. The concentration of this product may be batch-dependent.
<b>Storage</b>	Aliquot and store at -20°C (valid for 12 months). Avoid freeze/thaw cycles.
<b>Shipping</b>	Ice bags
<b>Buffer</b>	Supplied in 50mM Tris-Glycine(pH 7.4), 0.15M NaCl, 40% Glycerol, 0.01% sodium azide and 0.05% protective protein. Stable for 12 months from date of receipt.
<b>Purification</b>	Affinity Purification

**Application**

<b>Dilution Ratio</b>	WB 1:500-1:2000,IHC 1:200-1:1000
<b>Molecular Weight</b>	Calculated MW:26 kDa; Observed MW:26 kDa

**Antigen Information**

<b>Gene Name</b>	Mannan Binding Lectin
<b>Alternative Names</b>	MBL; MBP; MBP1; MBPD; MBL2D; MBP-C; COLEC1; HSMBPC
<b>Gene ID</b>	4153
<b>SwissProt ID</b>	P11226
<b>Immunogen</b>	Recombinant protein of human Mannan Binding Lectin

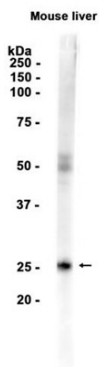
**Background**

This gene encodes the soluble mannose-binding lectin or mannose-binding protein found in serum. The protein encoded belongs to the collectin family and is an important element in the innate immune system. The protein recognizes mannose and

N-acetylglucosamine on many microorganisms, and is capable of activating the classical complement pathway. Deficiencies of this gene have been associated with susceptibility to autoimmune and infectious diseases. [provided by RefSeq, Jul 2008]

## Research Area

## Image Data



Western blot analysis of extracts from Mouse liver tissue using Mannan Binding Lectin Rabbit Monoclonal Antibody at 1:1000.