
Product Name: RFC2 Rabbit Monoclonal Antibody**Catalog #: AMRe87071**

For research use only.

Summary

Description	Recombinant rabbit monoclonal antibody
Host	Rabbit
Application	WB,ICC/IF,FC
Reactivity	Human,Mouse,Rat
Conjugation	Unconjugated
Modification	Unmodified
Isotype	IgG
Clonality	Monoclonal
Form	Liquid
Concentration	
Storage	Aliquot and store at -20°C (valid for 12 months). Avoid freeze/thaw cycles.
Shipping	Ice bags
Buffer	Supplied in 50mM Tris-Glycine(pH 7.4), 0.15M NaCl, 40% Glycerol, 0.01% sodium azide and 0.05% protective protein. Stable for 12 months from date of receipt.
Purification	Affinity Purification

Application

Dilution Ratio	WB 1:1000-1:5000,ICC/IF 1:100-1:200,FC 1:10-1:100
Molecular Weight	Calculated MW:39 kDa; Observed MW:39 kDa

Antigen Information

Gene Name	RFC2
Alternative Names	RFC40
Gene ID	5982
SwissProt ID	P35250
Immunogen	A synthetic peptide of human RFC2

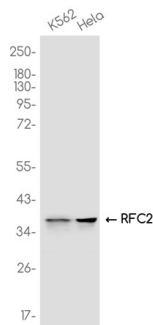
Background

This gene encodes a member of the activator 1 small subunits family. The elongation of primed DNA templates by DNA polymerase delta and epsilon requires the action of the accessory proteins, proliferating cell nuclear antigen (PCNA) and

replication factor C (RFC). Replication factor C, also called activator 1, is a protein complex consisting of five distinct subunits. This gene encodes the 40 kD subunit, which has been shown to be responsible for binding ATP and may help promote cell survival. Disruption of this gene is associated with Williams syndrome. Alternatively spliced transcript variants encoding distinct isoforms have been described. A pseudogene of this gene has been defined on chromosome 2. [provided by RefSeq, Jul 2013]

Research Area

Image Data



Western blot analysis of extracts from K562, HeLa cells using RFC2 Rabbit Monoclonal Antibody at 1:1000.