

---

**Product Name: CD31 Rabbit Monoclonal Antibody****Catalog #: AMRe87070**

For research use only.

**Summary**

<b>Description</b>	Recombinant rabbit monoclonal antibody
<b>Host</b>	Rabbit
<b>Application</b>	WB,IP
<b>Reactivity</b>	Mouse
<b>Conjugation</b>	Unconjugated
<b>Modification</b>	Unmodified
<b>Isotype</b>	IgG
<b>Clonality</b>	Monoclonal
<b>Form</b>	Liquid
<b>Concentration</b>	
<b>Storage</b>	Aliquot and store at -20°C (valid for 12 months). Avoid freeze/thaw cycles.
<b>Shipping</b>	Ice bags
<b>Buffer</b>	Supplied in 50mM Tris-Glycine(pH 7.4), 0.15M NaCl, 40% Glycerol, 0.01% sodium azide and 0.05% protective protein. Stable for 12 months from date of receipt.
<b>Purification</b>	Affinity Purification

**Application**

<b>Dilution Ratio</b>	WB 1:500-1:2000,IP 1:20-1:50
<b>Molecular Weight</b>	Calculated MW:81 kDa; Observed MW:130 kDa

**Antigen Information**

<b>Gene Name</b>	CD31
<b>Alternative Names</b>	Cd31; Pecam; C85791; PECAM-1
<b>Gene ID</b>	18613
<b>SwissProt ID</b>	Q08481
<b>Immunogen</b>	Recombinant protein of mouse CD31

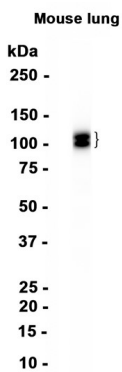
**Background**

Cell adhesion molecule which is required for leukocyte transendothelial migration (TEM) under most inflammatory conditions (By similarity). Tyr-679 plays a critical role in TEM and is required for efficient trafficking of PECAM1 to and from the lateral

border recycling compartment (LBRC) and is also essential for the LBRC membrane to be targeted around migrating leukocytes (By similarity).

## Research Area

## Image Data



Western blot analysis of extracts from Mouse lung tissue using CD31 Rabbit Monoclonal Antibody at 1:1000.