

Product Name: Phospho-Tau (Thr205) Rabbit Monoclonal Antibody**Catalog #: AMRe87069**

For research use only.

Summary

Description	Recombinant rabbit monoclonal antibody
Host	Rabbit
Application	WB
Reactivity	Human
Conjugation	Unconjugated
Modification	Phosphorylated
Isotype	IgG
Clonality	Monoclonal
Form	Liquid
Concentration	0.5mg/ml. The concentration of this product may be batch-dependent.
Storage	Aliquot and store at -20°C (valid for 12 months). Avoid freeze/thaw cycles.
Shipping	Ice bags
Buffer	Supplied in 50mM Tris-Glycine(pH 7.4), 0.15M NaCl, 40% Glycerol, 0.01% sodium azide and 0.05% protective protein. Stable for 12 months from date of receipt.
Purification	Affinity Purification

Application

Dilution Ratio	WB 1:2000-1:20000
Molecular Weight	Calculated MW:79 kDa; Observed MW:50-80 kDa

Antigen Information

Gene Name	Phospho-Tau
Alternative Names	TAU; MSTD; PPND; DDPAC; MAPTL; MTBT1; MTBT2; FTDP-17; PPP1R103
Gene ID	4137
SwissProt ID	P10636
Immunogen	A synthetic phosphopeptide corresponding to residues surrounding Thr205 of human Tau

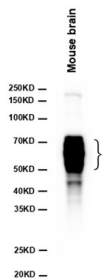
Background

This gene encodes the microtubule-associated protein tau (MAPT) whose transcript undergoes complex, regulated alternative

splicing, giving rise to several mRNA species. MAPT transcripts are differentially expressed in the nervous system, depending on stage of neuronal maturation and neuron type. MAPT gene mutations have been associated with several neurodegenerative disorders such as Alzheimer's disease, Pick's disease, frontotemporal dementia, cortico-basal degeneration and progressive supranuclear palsy. [provided by RefSeq, Jul 2008]

Research Area

Image Data



Western blot analysis of extracts from Mouse brain tissue using Phospho-Tau (Thr205) Rabbit Monoclonal Antibody at 1:1000.