

---

**Product Name: GCLC Rabbit Monoclonal Antibody****Catalog #: AMRe87067**

For research use only.

**Summary**

<b>Description</b>	Recombinant rabbit monoclonal antibody
<b>Host</b>	Rabbit
<b>Application</b>	WB,IP
<b>Reactivity</b>	Human,Mouse,Rat
<b>Conjugation</b>	Unconjugated
<b>Modification</b>	Unmodified
<b>Isotype</b>	IgG
<b>Clonality</b>	Monoclonal
<b>Form</b>	Liquid
<b>Concentration</b>	
<b>Storage</b>	Aliquot and store at -20°C (valid for 12 months). Avoid freeze/thaw cycles.
<b>Shipping</b>	Ice bags
<b>Buffer</b>	Supplied in 50mM Tris-Glycine(pH 7.4), 0.15M NaCl, 40% Glycerol, 0.01% sodium azide and 0.05% protective protein. Stable for 12 months from date of receipt.
<b>Purification</b>	Affinity Purification

**Application**

<b>Dilution Ratio</b>	WB 1:2000-1:20000,IP 1:20-1:50
<b>Molecular Weight</b>	Calculated MW:73 kDa; Observed MW:73 kDa

**Antigen Information**

<b>Gene Name</b>	GCLC
<b>Alternative Names</b>	GCL; GCS; GLCL; GLCLC
<b>Gene ID</b>	2729
<b>SwissProt ID</b>	P48506
<b>Immunogen</b>	A synthetic peptide of human GCLC

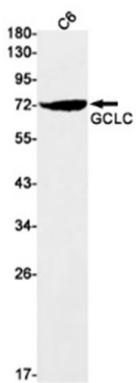
**Background**

Glutamate-cysteine ligase, also known as gamma-glutamylcysteine synthetase is the first rate-limiting enzyme of glutathione synthesis. The enzyme consists of two subunits, a heavy catalytic subunit and a light regulatory subunit. This locus encodes the

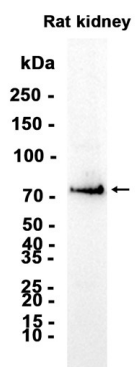
catalytic subunit, while the regulatory subunit is derived from a different gene located on chromosome 1p22-p21. Mutations at this locus have been associated with hemolytic anemia due to deficiency of gamma-glutamylcysteine synthetase and susceptibility to myocardial infarction.[provided by RefSeq, Oct 2010]

## Research Area

## Image Data



Western blot detection of GCLC in C6 cell lysates using GCLC antibody(1:1000 diluted).



Western blot analysis of extracts from Rat kidney tissue using AMRe87067 at 1:2000.