

---

**Product Name: CYP27A1 Rabbit Monoclonal Antibody****Catalog #: AMRe87057**

For research use only.

**Summary**

<b>Description</b>	Recombinant rabbit monoclonal antibody
<b>Host</b>	Rabbit
<b>Application</b>	WB,IHC,ICC/IF,FC
<b>Reactivity</b>	Human,Mouse,Rat
<b>Conjugation</b>	Unconjugated
<b>Modification</b>	Unmodified
<b>Isotype</b>	IgG
<b>Clonality</b>	Monoclonal
<b>Form</b>	Liquid
<b>Concentration</b>	
<b>Storage</b>	Aliquot and store at -20°C (valid for 12 months). Avoid freeze/thaw cycles.
<b>Shipping</b>	Ice bags
<b>Buffer</b>	Supplied in 50mM Tris-Glycine(pH 7.4), 0.15M NaCl, 40% Glycerol, 0.01% sodium azide and 0.05% protective protein. Stable for 12 months from date of receipt.
<b>Purification</b>	Affinity Purification

**Application**

<b>Dilution Ratio</b>	WB 1:1000-1:5000,IHC 1:100-1:200,ICC/IF 1:50-1:100,FC 1:50-1:200
<b>Molecular Weight</b>	Calculated MW:60 kDa; Observed MW:60 kDa

**Antigen Information**

<b>Gene Name</b>	CYP27A1
<b>Alternative Names</b>	CTX; CP27; CYP27
<b>Gene ID</b>	1593
<b>SwissProt ID</b>	Q02318
<b>Immunogen</b>	A synthetic peptide of human CYP27A1

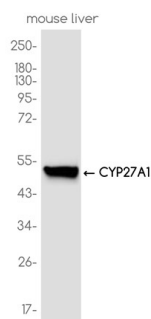
**Background**

This gene encodes a member of the cytochrome P450 superfamily of enzymes. The cytochrome P450 proteins are monooxygenases which catalyze many reactions involved in drug metabolism and synthesis of cholesterol, steroids and other

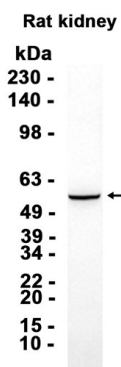
lipids. This mitochondrial protein oxidizes cholesterol intermediates as part of the bile synthesis pathway. Since the conversion of cholesterol to bile acids is the major route for removing cholesterol from the body, this protein is important for overall cholesterol homeostasis. Mutations in this gene cause cerebrotendinous xanthomatosis, a rare autosomal recessive lipid storage disease. [provided by RefSeq, Jul 2008]

## Research Area

## Image Data



Western blot analysis of extracts from Mouse liver cells using CYP27A1 Rabbit Monoclonal Antibody at 1:1000.



Western blot analysis of extracts from Rat kidney tissue using AMRe87057 at 1:1000.