

Product Name: RBMX2 Rabbit Monoclonal Antibody**Catalog #: AMRe87047**

For research use only.

Summary

Description	Recombinant rabbit monoclonal antibody
Host	Rabbit
Application	WB,IHC,ICC/IF
Reactivity	Human,Mouse,Rat
Conjugation	Unconjugated
Modification	Unmodified
Isotype	IgG
Clonality	Monoclonal
Form	Liquid
Concentration	
Storage	Aliquot and store at -20°C (valid for 12 months). Avoid freeze/thaw cycles.
Shipping	Ice bags
Buffer	Supplied in 50mM Tris-Glycine(pH 7.4), 0.15M NaCl, 40% Glycerol, 0.01% sodium azide and 0.05% protective protein. Stable for 12 months from date of receipt.
Purification	Affinity Purification

Application

Dilution Ratio	WB 1:1000-1:5000,IHC 1:50-1:200,ICC/IF 1:100-1:200
Molecular Weight	Calculated MW:37 kDa; Observed MW:37 kDa

Antigen Information

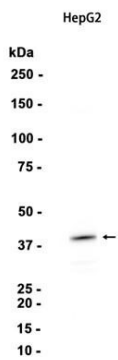
Gene Name	RBMX2
Alternative Names	Snu17; CGI-79
Gene ID	51634
SwissProt ID	Q9Y388
Immunogen	A synthetic peptide of human RBMX2

Background

Involved in pre-mRNA splicing as component of the activated spliceosome.

Research Area

Image Data



Western blot analysis of extracts from HepG2 cells using RBMX2 Rabbit Monoclonal Antibody at 1:1000.