
Product Name: Cyp26B1 Rabbit Monoclonal Antibody**Catalog #: AMRe87028**

For research use only.

Summary

Description	Recombinant rabbit monoclonal antibody
Host	Rabbit
Application	WB,FC
Reactivity	Human,Mouse,Rat
Conjugation	Unconjugated
Modification	Unmodified
Isotype	IgG
Clonality	Monoclonal
Form	Liquid
Concentration	
Storage	Aliquot and store at -20°C (valid for 12 months). Avoid freeze/thaw cycles.
Shipping	Ice bags
Buffer	Supplied in 50mM Tris-Glycine(pH 7.4), 0.15M NaCl, 40% Glycerol, 0.01% sodium azide and 0.05% protective protein. Stable for 12 months from date of receipt.
Purification	Affinity Purification

Application

Dilution Ratio	WB 1:1000-1:5000,FC 1:50-1:200
Molecular Weight	Calculated MW:58 kDa; Observed MW:58 kDa

Antigen Information

Gene Name	Cyp26B1
Alternative Names	RHFCA; CYP26A2; P450RAI2; P450RAI-2
Gene ID	56603
SwissProt ID	Q9NR63
Immunogen	Recombinant protein of human Cyp26B1

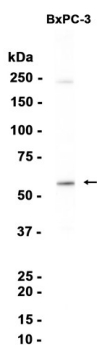
Background

This gene encodes a member of the cytochrome P450 superfamily. The cytochrome P450 proteins are monooxygenases which catalyze many reactions involved in drug metabolism and synthesis of cholesterol, steroids and other lipids. The encoded

protein is localized to the endoplasmic reticulum, and functions as a critical regulator of all-trans retinoic acid levels by the specific inactivation of all-trans retinoic acid to hydroxylated forms. Mutations in this gene are associated with radiohumeral fusions and other skeletal and craniofacial anomalies, and increased levels of the encoded protein are associated with atherosclerotic lesions. Alternative splicing results in multiple transcript variants. [provided by RefSeq, Apr 2013]

Research Area

Image Data



Western blot analysis of extracts from BxPC-3 cells using Cyp26B1 Rabbit Monoclonal Antibody at 1:1000.