

---

**Product Name: EVPL Rabbit Monoclonal Antibody****Catalog #: AMRe87023**

For research use only.

**Summary**

<b>Description</b>	Recombinant rabbit monoclonal antibody
<b>Host</b>	Rabbit
<b>Application</b>	WB,IHC,FC
<b>Reactivity</b>	Human
<b>Conjugation</b>	Unconjugated
<b>Modification</b>	Unmodified
<b>Isotype</b>	IgG
<b>Clonality</b>	Monoclonal
<b>Form</b>	Liquid
<b>Concentration</b>	1.9mg/ml. The concentration of this product may be batch-dependent.
<b>Storage</b>	Aliquot and store at -20°C (valid for 12 months). Avoid freeze/thaw cycles.
<b>Shipping</b>	Ice bags
<b>Buffer</b>	Supplied in 50mM Tris-Glycine(pH 7.4), 0.15M NaCl, 40% Glycerol, 0.01% sodium azide and 0.05% protective protein. Stable for 12 months from date of receipt.
<b>Purification</b>	Affinity Purification

**Application**

<b>Dilution Ratio</b>	WB 1:1000-1:5000,IHC 1:200-1:1000,FC 1:50-1:200
<b>Molecular Weight</b>	Calculated MW:232 kDa; Observed MW:232 kDa

**Antigen Information**

<b>Gene Name</b>	EVPL
<b>Alternative Names</b>	EVPK
<b>Gene ID</b>	2125
<b>SwissProt ID</b>	Q92817
<b>Immunogen</b>	Recombinant protein of human EVPL

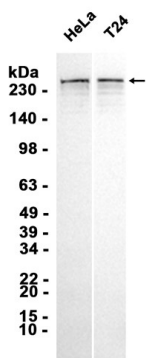
**Background**

This gene encodes a member of the plakin family of proteins that forms a component of desmosomes and the epidermal cornified envelope. This gene is located in the tylosis oesophageal cancer locus on chromosome 17q25, and its deletion is

associated with both familial and sporadic forms of oesophageal squamous cell carcinoma. Patients suffering from the autoimmune mucocutaneous disorder, paraneoplastic pemphigus, develop antibodies against the encoded protein. [provided by RefSeq, Jul 2016]

## Research Area

## Image Data



Western blot analysis of extracts from HeLa , T24 cells using EVPL Rabbit Monoclonal Antibody at 1:1000.