

Product Name: KIF1A Rabbit Monoclonal Antibody**Catalog #: AMRe87015**

For research use only.

Summary

Description	Recombinant rabbit monoclonal antibody
Host	Rabbit
Application	WB, ICC/IF, FC, IP
Reactivity	Human, Rat
Conjugation	Unconjugated
Modification	Unmodified
Isotype	IgG
Clonality	Monoclonal
Form	Liquid
Concentration	
Storage	Aliquot and store at -20°C (valid for 12 months). Avoid freeze/thaw cycles.
Shipping	Ice bags
Buffer	Supplied in 50mM Tris-Glycine (pH 7.4), 0.15M NaCl, 40% Glycerol, 0.01% sodium azide and 0.05% protective protein. Stable for 12 months from date of receipt.
Purification	Affinity Purification

Application

Dilution Ratio	WB 1:1000-1:5000, ICC/IF 1:100-1:200, FC 1:50-1:200, IP 1:50-1:100
Molecular Weight	Calculated MW: 191 kDa; Observed MW: 191 kDa

Antigen Information

Gene Name	KIF1A
Alternative Names	ATSV; MRD9; HSN2C; SPG30; UNC104; C2orf20
Gene ID	547
SwissProt ID	Q12756
Immunogen	A synthetic peptide of human KIF1A

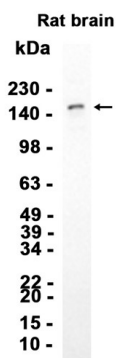
Background

The protein encoded by this gene is a member of the kinesin family and functions as an anterograde motor protein that transports membranous organelles along axonal microtubules. Mutations at this locus have been associated with spastic

paraplegia-30 and hereditary sensory neuropathy IIC. Alternatively spliced transcript variants encoding distinct isoforms have been described. [provided by RefSeq, Apr 2012]

Research Area

Image Data



Western blot analysis of extracts from Rat brain tissue using KIF1A Rabbit Monoclonal Antibody at 1:2000.