
Product Name: Angiotensin Converting Enzyme 1 Rabbit Monoclonal Antibody**Catalog #: AMRe87011**

For research use only.

Summary

Description	Recombinant rabbit monoclonal antibody
Host	Rabbit
Application	WB,IHC
Reactivity	Human,Mouse,Rat
Conjugation	Unconjugated
Modification	Unmodified
Isotype	IgG
Clonality	Monoclonal
Form	Liquid
Concentration	0.15mg/ml. The concentration of this product may be batch-dependent.
Storage	Aliquot and store at -20°C (valid for 12 months). Avoid freeze/thaw cycles.
Shipping	Ice bags
Buffer	Supplied in 50mM Tris-Glycine(pH 7.4), 0.15M NaCl, 40% Glycerol, 0.01% sodium azide and 0.05% protective protein. Stable for 12 months from date of receipt.
Purification	Affinity Purification

Application

Dilution Ratio	WB 1:500-1:2000,IHC 1:500-1:2000
Molecular Weight	Calculated MW:150 kDa; Observed MW:180 kDa

Antigen Information

Gene Name	Angiotensin Converting Enzyme 1
Alternative Names	DCP; ACE1; DCP1; CD143
Gene ID	1636
SwissProt ID	P12821
Immunogen	Recombinant protein of human Angiotensin Converting Enzyme 1

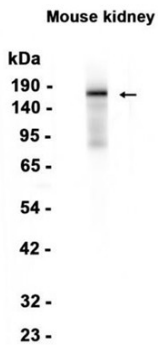
Background

This gene encodes an enzyme involved in catalyzing the conversion of angiotensin I into a physiologically active peptide angiotensin II. Angiotensin II is a potent vasopressor and aldosterone-stimulating peptide that controls blood pressure and

fluid-electrolyte balance. This enzyme plays a key role in the renin-angiotensin system. Many studies have associated the presence or absence of a 287 bp Alu repeat element in this gene with the levels of circulating enzyme or cardiovascular pathophysiologies. Multiple alternatively spliced transcript variants encoding different isoforms have been identified, and two most abundant spliced variants encode the somatic form and the testicular form, respectively, that are equally active. [provided by RefSeq, May 2010]

Research Area

Image Data



Western blot analysis of extracts from Mouse kidney tissue using Angiotensin Converting Enzyme 1 Rabbit Monoclonal Antibody at 1:1000.