

Product Name: BubR1 Rabbit Monoclonal Antibody**Catalog #: AMRe87008**

For research use only.

Summary

Description	Recombinant rabbit monoclonal antibody
Host	Rabbit
Application	WB,IHC,ICC/IF
Reactivity	Human,Mouse,Rat
Conjugation	Unconjugated
Modification	Unmodified
Isotype	IgG
Clonality	Monoclonal
Form	Liquid
Concentration	
Storage	Aliquot and store at -20°C (valid for 12 months). Avoid freeze/thaw cycles.
Shipping	Ice bags
Buffer	Supplied in 50mM Tris-Glycine(pH 7.4), 0.15M NaCl, 40% Glycerol, 0.01% sodium azide and 0.05% protective protein. Stable for 12 months from date of receipt.
Purification	Affinity Purification

Application

Dilution Ratio	WB 1:500-1:2000,IHC 1:50-1:200,ICC/IF 1:20-1:50
Molecular Weight	Calculated MW:120 kDa; Observed MW:130 kDa

Antigen Information

Gene Name	BubR1
Alternative Names	MVA1; SSK1; BUBR1; Bub1A; MAD3L; hBUBR1; BUB1beta
Gene ID	701
SwissProt ID	O60566
Immunogen	Recombinant protein of human BubR1

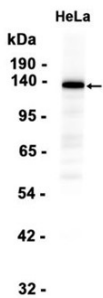
Background

This gene encodes a kinase involved in spindle checkpoint function. The protein has been localized to the kinetochore and plays a role in the inhibition of the anaphase-promoting complex/cyclosome (APC/C), delaying the onset of anaphase and

ensuring proper chromosome segregation. Impaired spindle checkpoint function has been found in many forms of cancer.
[provided by RefSeq, Jul 2008]

Research Area

Image Data



Western blot analysis of extracts from HeLa cells using BubR1 Rabbit Monoclonal Antibody at 1:1000.