

---

**Product Name: Heparanase 1 Rabbit Monoclonal Antibody****Catalog #: AMRe86992**

For research use only.

**Summary**

<b>Description</b>	Recombinant rabbit monoclonal antibody
<b>Host</b>	Rabbit
<b>Application</b>	WB
<b>Reactivity</b>	Human
<b>Conjugation</b>	Unconjugated
<b>Modification</b>	Unmodified
<b>Isotype</b>	IgG
<b>Clonality</b>	Monoclonal
<b>Form</b>	Liquid
<b>Concentration</b>	
<b>Storage</b>	Aliquot and store at -20°C (valid for 12 months). Avoid freeze/thaw cycles.
<b>Shipping</b>	Ice bags
<b>Buffer</b>	Supplied in 50mM Tris-Glycine(pH 7.4), 0.15M NaCl, 40% Glycerol, 0.01% sodium azide and 0.05% protective protein. Stable for 12 months from date of receipt.
<b>Purification</b>	Affinity Purification

**Application**

<b>Dilution Ratio</b>	WB 1:500-1:2000
<b>Molecular Weight</b>	Calculated MW:61 kDa; Observed MW:61 kDa

**Antigen Information**

<b>Gene Name</b>	Heparanase 1
<b>Alternative Names</b>	HPA; HPA1; HPR1; HSE1; HPSE1
<b>Gene ID</b>	10855
<b>SwissProt ID</b>	Q9Y251
<b>Immunogen</b>	Recombinant protein of human Heparanase 1

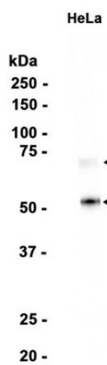
**Background**

Heparan sulfate proteoglycans are major components of the basement membrane and extracellular matrix. The protein encoded by this gene is an enzyme that cleaves heparan sulfate proteoglycans to permit cell movement through remodeling of

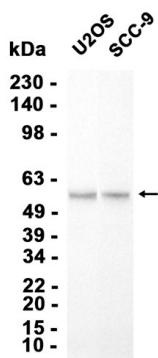
the extracellular matrix. In addition, this cleavage can release bioactive molecules from the extracellular matrix. Several transcript variants encoding different isoforms have been found for this gene. [provided by RefSeq, Sep 2011]

## Research Area

## Image Data



Western blot analysis of extracts from HeLa cells using Heparanase 1 Rabbit Monoclonal Antibody at 1:1000.



Western blot analysis of extracts from U2OS, SCC-9 cells using AMRe86992 at 1:1000.