

Product Name: Extracellular matrix protein 1 Rabbit Monoclonal Antibody**Catalog #: AMRe86991**

For research use only.

Summary

Description	Recombinant rabbit monoclonal antibody
Host	Rabbit
Application	WB,IHC,IP
Reactivity	Human
Conjugation	Unconjugated
Modification	Unmodified
Isotype	IgG
Clonality	Monoclonal
Form	Liquid
Concentration	
Storage	Aliquot and store at -20°C (valid for 12 months). Avoid freeze/thaw cycles.
Shipping	Ice bags
Buffer	Supplied in 50mM Tris-Glycine(pH 7.4), 0.15M NaCl, 40% Glycerol, 0.01% sodium azide and 0.05% protective protein. Stable for 12 months from date of receipt.
Purification	Affinity Purification

Application

Dilution Ratio	WB 1:500-1:2000,IHC 1:200-1:500,IP 1:20-1:50
Molecular Weight	Calculated MW:61 kDa; Observed MW:75 kDa

Antigen Information

Gene Name	Extracellular matrix protein 1
Alternative Names	URBWD
Gene ID	1893
SwissProt ID	Q16610
Immunogen	Recombinant protein of human Extracellular matrix protein 1

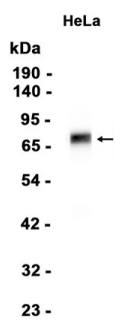
Background

This gene encodes a soluble protein that is involved in endochondral bone formation, angiogenesis, and tumor biology. It also interacts with a variety of extracellular and structural proteins, contributing to the maintenance of skin integrity and

homeostasis. Mutations in this gene are associated with lipoid proteinosis disorder (also known as hyalinosis cutis et mucosae or Urbach-Wiethe disease) that is characterized by generalized thickening of skin, mucosae and certain viscera. Alternatively spliced transcript variants encoding distinct isoforms have been described for this gene. [provided by RefSeq, Feb 2011]

Research Area

Image Data



Western blot analysis of extracts from HeLa cells using Extracellular matrix protein 1 Rabbit Monoclonal Antibody at 1:1000.