
Product Name: Cathepsin K Rabbit Monoclonal Antibody**Catalog #: AMRe86987**

For research use only.

Summary

Description	Recombinant rabbit monoclonal antibody
Host	Rabbit
Application	WB,IHC
Reactivity	Human,Mouse,Rat
Conjugation	Unconjugated
Modification	Unmodified
Isotype	IgG
Clonality	Monoclonal
Form	Liquid
Concentration	
Storage	Aliquot and store at -20°C (valid for 12 months). Avoid freeze/thaw cycles.
Shipping	Ice bags
Buffer	Supplied in 50mM Tris-Glycine(pH 7.4), 0.15M NaCl, 40% Glycerol, 0.01% sodium azide and 0.05% protective protein. Stable for 12 months from date of receipt.
Purification	Affinity Purification

Application

Dilution Ratio	WB 1:1000-1:5000,IHC 1:200-1:1000
Molecular Weight	Calculated MW:37 kDa; Observed MW:37 kDa

Antigen Information

Gene Name	Cathepsin K
Alternative Names	CTSO; PKND; PYCD; CTSO2; CTSO1; CTSO2
Gene ID	1513
SwissProt ID	P43235
Immunogen	A synthetic peptide of human Cathepsin K

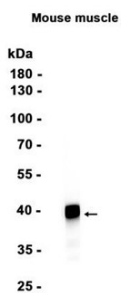
Background

The protein encoded by this gene is a lysosomal cysteine proteinase involved in bone remodeling and resorption. This protein, which is a member of the peptidase C1 protein family, is predominantly expressed in osteoclasts. However, the encoded protein

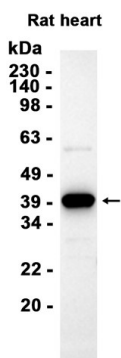
is also expressed in a significant fraction of human breast cancers, where it could contribute to tumor invasiveness. Mutations in this gene are the cause of pycnodysostosis, an autosomal recessive disease characterized by osteosclerosis and short stature. [provided by RefSeq, Apr 2013]

Research Area

Image Data



Western blot analysis of extracts from Mouse muscle tissue using Cathepsin K Rabbit Monoclonal Antibody at 1:1000.



Western blot analysis of extracts from Rat heart tissue using AMRe86987 at 1:1000.