

**Product Name: Hsp22 Rabbit Monoclonal Antibody****Catalog #: AMRe86983**

For research use only.

**Summary**

<b>Description</b>	Recombinant rabbit monoclonal antibody
<b>Host</b>	Rabbit
<b>Application</b>	WB,IHC,ICC/IF
<b>Reactivity</b>	Human,Mouse,Rat
<b>Conjugation</b>	Unconjugated
<b>Modification</b>	Unmodified
<b>Isotype</b>	IgG
<b>Clonality</b>	Monoclonal
<b>Form</b>	Liquid
<b>Concentration</b>	
<b>Storage</b>	Aliquot and store at -20°C (valid for 12 months). Avoid freeze/thaw cycles.
<b>Shipping</b>	Ice bags
<b>Buffer</b>	Supplied in 50mM Tris-Glycine(pH 7.4), 0.15M NaCl, 40% Glycerol, 0.01% sodium azide and 0.05% protective protein. Stable for 12 months from date of receipt.
<b>Purification</b>	Affinity Purification

**Application**

<b>Dilution Ratio</b>	WB 1:1000-1:5000,IHC 1:50-1:100,ICC/IF 1:50-1:100
<b>Molecular Weight</b>	Calculated MW:22 kDa; Observed MW:22 kDa

**Antigen Information**

<b>Gene Name</b>	Hsp22
<b>Alternative Names</b>	H11; HMN2; CMT2L; DHMN2; E2IG1; HMN2A; HSP22
<b>Gene ID</b>	26353
<b>SwissProt ID</b>	Q9UJY1
<b>Immunogen</b>	A synthetic peptide of human Hsp22

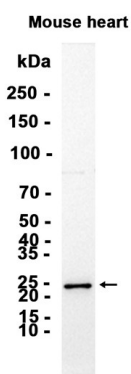
**Background**

The protein encoded by this gene belongs to the superfamily of small heat-shock proteins containing a conservative alpha-crystallin domain at the C-terminal part of the molecule. The expression of this gene is induced by estrogen in estrogen

receptor-positive breast cancer cells, and this protein also functions as a chaperone in association with Bag3, a stimulator of macroautophagy. Thus, this gene appears to be involved in regulation of cell proliferation, apoptosis, and carcinogenesis, and mutations in this gene have been associated with different neuromuscular diseases, including Charcot-Marie-Tooth disease. [provided by RefSeq, Jul 2008]

## Research Area

## Image Data



Western blot analysis of extracts from Mouse heart tissue using Hsp22 Rabbit Monoclonal Antibody at 1:1000.