

Product Name: LAMP2A Rabbit Monoclonal Antibody**Catalog #: AMRe86977**

For research use only.

Summary

Description	Recombinant rabbit monoclonal antibody
Host	Rabbit
Application	WB,IHC,FC,IP
Reactivity	Human, Mouse, Rat
Conjugation	Unconjugated
Modification	Unmodified
Isotype	IgG
Clonality	Monoclonal
Form	Liquid
Concentration	0.55mg/ml. The concentration of this product may be batch-dependent.
Storage	Aliquot and store at -20°C (valid for 12 months). Avoid freeze/thaw cycles.
Shipping	Ice bags
Buffer	Supplied in 50mM Tris-Glycine(pH 7.4), 0.15M NaCl, 40% Glycerol, 0.01% sodium azide and 0.05% protective protein. Stable for 12 months from date of receipt.
Purification	Affinity Purification

Application

Dilution Ratio	WB 1:500-1:2000,IHC 1:20-1:100,FC 1:100-1:200,IP 1:20-1:50
Molecular Weight	Calculated MW:45 kDa; Observed MW:110 kDa

Antigen Information

Gene Name	LAMP2A
Alternative Names	LAMPB; CD107b; LAMP-2; LGP-96; LGP110
Gene ID	3920
SwissProt ID	P13473
Immunogen	A synthetic peptide of human LAMP2A

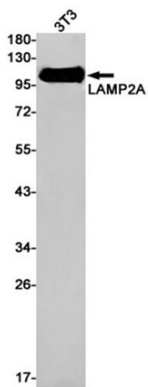
Background

The protein encoded by this gene is a member of a family of membrane glycoproteins. This glycoprotein provides selectins with carbohydrate ligands. It may play a role in tumor cell metastasis. It may also function in the protection, maintenance, and

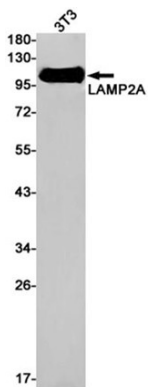
adhesion of the lysosome. Alternative splicing of this gene results in multiple transcript variants encoding distinct proteins.
[provided by RefSeq, Jul 2008]

Research Area

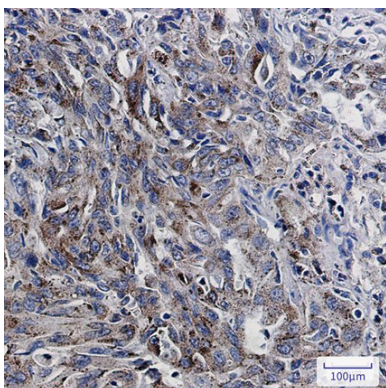
Image Data



Western blot detection of LAMP2A in 3T3 cell lysates using LAMP2A antibody(1:1000 diluted).



Western blot analysis of extracts from HeLa,MCF-7 cells using AMRe86977 at 1:1000.



Immunohistochemical analysis of paraffin-embedded human lung cancer using AMRe86977 antibody.