
Product Name: CstF-64 Rabbit Monoclonal Antibody**Catalog #: AMRe86971**

For research use only.

Summary

Description	Recombinant rabbit monoclonal antibody
Host	Rabbit
Application	WB,IHC,ICC/IF,FC,IP
Reactivity	Human
Conjugation	Unconjugated
Modification	Unmodified
Isotype	IgG
Clonality	Monoclonal
Form	Liquid
Concentration	
Storage	Aliquot and store at -20°C (valid for 12 months). Avoid freeze/thaw cycles.
Shipping	Ice bags
Buffer	Supplied in 50mM Tris-Glycine(pH 7.4), 0.15M NaCl, 40% Glycerol, 0.01% sodium azide and 0.05% protective protein. Stable for 12 months from date of receipt.
Purification	Affinity Purification

Application

Dilution Ratio	WB 1:1000-1:5000,IHC 1:50-1:100,ICC/IF 1:200-1:500,FC 1:20-1:50,IP 1:20-1:50
Molecular Weight	Calculated MW:61 kDa; Observed MW:61 kDa

Antigen Information

Gene Name	CstF-64
Alternative Names	CstF-64
Gene ID	1478
SwissProt ID	P33240
Immunogen	A synthetic peptide of human CstF-64

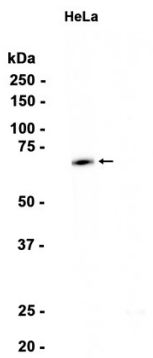
Background

This gene encodes a nuclear protein with an RRM (RNA recognition motif) domain. The protein is a member of the cleavage stimulation factor (CSTF) complex that is involved in the 3' end cleavage and polyadenylation of pre-mRNAs. Specifically, this

protein binds GU-rich elements within the 3'-untranslated region of mRNAs. [provided by RefSeq, Jul 2008]

Research Area

Image Data



Western blot analysis of extracts from HeLa cells using CstF-64 Rabbit Monoclonal Antibody at 1:1000.