
Product Name: Prostacyclin receptor Rabbit Monoclonal Antibody**Catalog #: AMRe86968**

For research use only.

Summary

Description	Recombinant rabbit monoclonal antibody
Host	Rabbit
Application	WB,IHC,FC
Reactivity	Human
Conjugation	Unconjugated
Modification	Unmodified
Isotype	IgG
Clonality	Monoclonal
Form	Liquid
Concentration	
Storage	Aliquot and store at -20°C (valid for 12 months). Avoid freeze/thaw cycles.
Shipping	Ice bags
Buffer	Supplied in 50mM Tris-Glycine(pH 7.4), 0.15M NaCl, 40% Glycerol, 0.01% sodium azide and 0.05% protective protein. Stable for 12 months from date of receipt.
Purification	Affinity Purification

Application

Dilution Ratio	WB 1:500-1:2000,IHC 1:100-1:200,FC 1:50-1:200
Molecular Weight	Calculated MW:41 kDa; Observed MW:41 kDa

Antigen Information

Gene Name	Prostacyclin receptor
Alternative Names	IP; PRIPR
Gene ID	5739
SwissProt ID	P43119
Immunogen	Recombinant protein of human Prostacyclin receptor

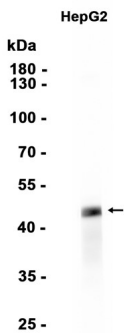
Background

The protein encoded by this gene is a member of the G-protein coupled receptor family 1 and has been shown to be a receptor for prostacyclin. Prostacyclin, the major product of cyclooxygenase in macrovascular endothelium, elicits a potent vasodilation

and inhibition of platelet aggregation through binding to this receptor. [provided by RefSeq, Jul 2008]

Research Area

Image Data



Western blot analysis of extracts from HepG2 cells using Prostacyclin receptor Rabbit Monoclonal Antibody at 1:10000.