

**Product Name: Fetuin A Rabbit Monoclonal Antibody****Catalog #: AMRe86964**

For research use only.

**Summary**

<b>Description</b>	Recombinant rabbit monoclonal antibody
<b>Host</b>	Rabbit
<b>Application</b>	WB
<b>Reactivity</b>	Human
<b>Conjugation</b>	Unconjugated
<b>Modification</b>	Unmodified
<b>Isotype</b>	IgG
<b>Clonality</b>	Monoclonal
<b>Form</b>	Liquid
<b>Concentration</b>	
<b>Storage</b>	Aliquot and store at -20°C (valid for 12 months). Avoid freeze/thaw cycles.
<b>Shipping</b>	Ice bags
<b>Buffer</b>	Supplied in 50mM Tris-Glycine(pH 7.4), 0.15M NaCl, 40% Glycerol, 0.01% sodium azide and 0.05% protective protein. Stable for 12 months from date of receipt.
<b>Purification</b>	Affinity Purification

**Application**

<b>Dilution Ratio</b>	WB 1:1000-1:5000
<b>Molecular Weight</b>	Calculated MW:39 kDa; Observed MW:45-50 kDa

**Antigen Information**

<b>Gene Name</b>	Fetuin A
<b>Alternative Names</b>	AHS; A2HS; HSGA; FETUA
<b>Gene ID</b>	197
<b>SwissProt ID</b>	P02765
<b>Immunogen</b>	A synthetic peptide of human Fetuin A

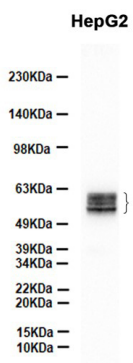
**Background**

The protein encoded by this gene is a negatively-charged serum glycoprotein that is synthesized by hepatocytes. The encoded protein consists of two polypeptide chains, which are both cleaved from a proprotein encoded from a single mRNA. It is

involved in several processes, including endocytosis, brain development, and the formation of bone tissue. Defects in this gene are a cause of susceptibility to leanness. [provided by RefSeq, Aug 2017]

## Research Area

## Image Data



Western blot analysis of extracts from HepG2 cells using Fetuin A Rabbit Monoclonal Antibody at 1:3000.