

---

**Product Name: Bcl10 Rabbit Monoclonal Antibody****Catalog #: AMRe86954**

For research use only.

**Summary**

<b>Description</b>	Recombinant rabbit monoclonal antibody
<b>Host</b>	Rabbit
<b>Application</b>	WB,IHC,ICC/IF,FC,IP
<b>Reactivity</b>	Human
<b>Conjugation</b>	Unconjugated
<b>Modification</b>	Unmodified
<b>Isotype</b>	IgG
<b>Clonality</b>	Monoclonal
<b>Form</b>	Liquid
<b>Concentration</b>	
<b>Storage</b>	Aliquot and store at -20°C (valid for 12 months). Avoid freeze/thaw cycles.
<b>Shipping</b>	Ice bags
<b>Buffer</b>	Supplied in 50mM Tris-Glycine(pH 7.4), 0.15M NaCl, 40% Glycerol, 0.01% sodium azide and 0.05% protective protein. Stable for 12 months from date of receipt.
<b>Purification</b>	Affinity Purification

**Application**

<b>Dilution Ratio</b>	WB 1:1000-1:5000,IHC 1:50-1:100,ICC/IF 1:100-1:200,FC 1:100-1:200,IP 1:20-1:50
<b>Molecular Weight</b>	Calculated MW:26 kDa; Observed MW:26 kDa

**Antigen Information**

<b>Gene Name</b>	Bcl10
<b>Alternative Names</b>	CLAP; mE10; CIPER; IMD37; c-E10; CARMEN
<b>Gene ID</b>	8915
<b>SwissProt ID</b>	O95999
<b>Immunogen</b>	A synthetic peptide of human Bcl10

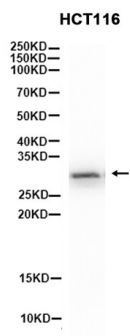
**Background**

This gene was identified by its translocation in a case of mucosa-associated lymphoid tissue (MALT) lymphoma. The protein encoded by this gene contains a caspase recruitment domain (CARD), and has been shown to induce apoptosis and to activate

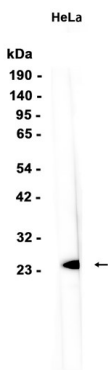
NF-kappaB. This protein is reported to interact with other CARD domain containing proteins including CARD9, 10, 11 and 14, which are thought to function as upstream regulators in NF-kappaB signaling. This protein is found to form a complex with MALT1, a protein encoded by another gene known to be translocated in MALT lymphoma. MALT1 and this protein are thought to synergize in the activation of NF-kappaB, and the deregulation of either of them may contribute to the same pathogenetic process that leads to the malignancy. Alternative splicing results in multiple transcript variants. [provided by RefSeq, Mar 2016]

## Research Area

## Image Data



Western blot analysis of extracts from HCT116 cells using Bcl10 Rabbit Monoclonal Antibody at 1:1000.



Western blot analysis of extracts from HeLa cells using AMRe86954 at 1:1000.