
Product Name: SP17 Rabbit Monoclonal Antibody**Catalog #: AMRe86953**

For research use only.

Summary

Description	Recombinant rabbit monoclonal antibody
Host	Rabbit
Application	WB,ICC/IF,FC
Reactivity	Human,Mouse,Rat
Conjugation	Unconjugated
Modification	Unmodified
Isotype	IgG
Clonality	Monoclonal
Form	Liquid
Concentration	
Storage	Aliquot and store at -20°C (valid for 12 months). Avoid freeze/thaw cycles.
Shipping	Ice bags
Buffer	Supplied in 50mM Tris-Glycine(pH 7.4), 0.15M NaCl, 40% Glycerol, 0.01% sodium azide and 0.05% protective protein. Stable for 12 months from date of receipt.
Purification	Affinity Purification

Application

Dilution Ratio	WB 1:1000-1:5000,ICC/IF 1:100-1:200,FC 1:50-1:200
Molecular Weight	Calculated MW:17 kDa; Observed MW:17 kDa

Antigen Information

Gene Name	SP17
Alternative Names	CT22; SP17; SP17-1
Gene ID	53340
SwissProt ID	Q15506
Immunogen	A synthetic peptide of human SP17

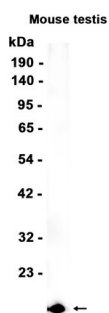
Background

This gene encodes a protein present at the cell surface. The N-terminus has sequence similarity to human cAMP-dependent protein kinase A (PKA) type II alpha regulatory subunit (RIIa) while the C-terminus has an IQ calmodulin-binding motif. The

central portion of the protein has carbohydrate binding motifs and likely functions in cell-cell adhesion. The protein was initially characterized by its involvement in the binding of sperm to the zona pellucida of the oocyte. Recent studies indicate that it is also involved in additional cell-cell adhesion functions such as immune cell migration and metastasis. A retrotransposed pseudogene is present on chromosome 10q22.[provided by RefSeq, Jan 2009]

Research Area

Image Data



Western blot analysis of extracts from Mouse testis tissue using SP17 Rabbit Monoclonal Antibody at 1:1000.