

**Product Name: DPD Rabbit Monoclonal Antibody**  
**Catalog #: AMRe86951**



## Summary

<b>Production Name</b>	DPD Rabbit Monoclonal Antibody
<b>Description</b>	Rabbit Monoclonal antibody
<b>Host</b>	Rabbit
<b>Application</b>	WB, IHC-P, ICC/IF, FC
<b>Reactivity</b>	Human

## Performance

<b>Conjugation</b>	Unconjugated
<b>Modification</b>	Unmodified
<b>Isotype</b>	IgG
<b>Clonality</b>	Monoclonal
<b>Form</b>	Liquid
<b>Storage</b>	Store at 4°C short term. Aliquot and store at -20°C long term. Avoid freeze/thaw cycles.
<b>Buffer</b>	Supplied in 50mM Tris-Glycine(pH 7.4), 0.15M NaCl, 40% Glycerol, 0.01% sodium azide and 0.05% BSA. Stable for 12 months from date of receipt.
<b>Purification</b>	Affinity Purification

## Immunogen

<b>Gene Name</b>	DPD
<b>Alternative Names</b>	DHP; DPD; DHPDHASE
<b>Gene ID</b>	1806
<b>SwissProt ID</b>	Q12882.

## Application

<b>Dilution Ratio</b>	WB: 1:1000-1:5000 IHC-P: 1:200-1:500 ICC/IF: 1:200-1:500 FC: 1:20-1:50
<b>Molecular Weight</b>	Calculated MW:111 kDa; Observed MW:111 kDa

## Background

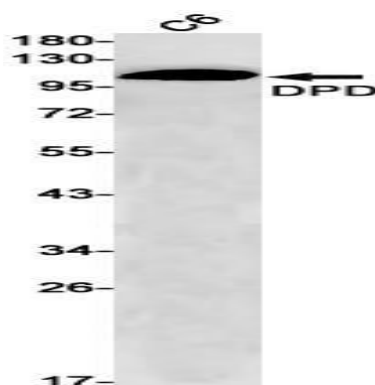
**Product Name: DPD Rabbit Monoclonal Antibody**  
**Catalog #: AMRe86951**



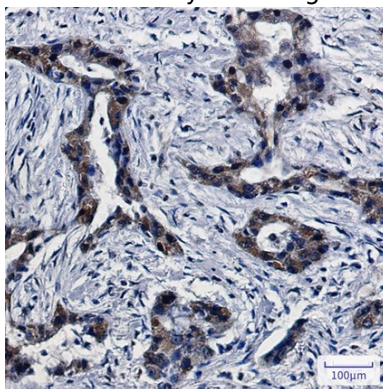
The protein encoded by this gene is a pyrimidine catabolic enzyme and the initial and rate-limiting factor in the pathway of uracil and thymidine catabolism. Mutations in this gene result in dihydropyrimidine dehydrogenase deficiency, an error in pyrimidine metabolism associated with thymine-uraciluria and an increased risk of toxicity in cancer patients receiving 5-fluorouracil chemotherapy. Two transcript variants encoding different isoforms have been found for this gene. [provided by RefSeq, May 2009]

## Research Area

## Image Data

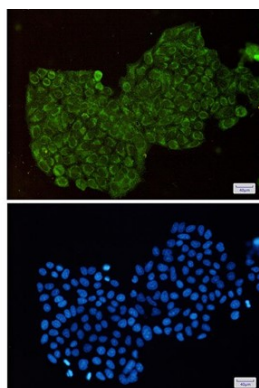


Western blot detection of DPD in C6 cell lysates using DPD antibody(1:1000 diluted).

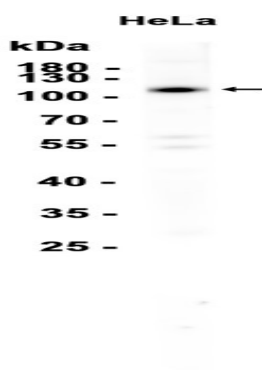


Immunohistochemical analysis of paraffin-embedded human lung cancer using AMRe86951 antibody.

**Product Name: DPD Rabbit Monoclonal Antibody**  
**Catalog #: AMRe86951**



Immunofluorescent analysis of HeLa cells using AMRe86951 antibody (green), and DAPI (blue).



Western blot analysis of extracts from HeLa cells using AMRe86951 at 1:1000.

## **Note**

For research use only.