

Product Name: Nucleolin Rabbit Monoclonal Antibody**Catalog #: AMRe86948**

For research use only.

Summary

Description	Recombinant rabbit monoclonal antibody
Host	Rabbit
Application	WB,IHC,ICC/IF,FC
Reactivity	Human,Mouse,Rat
Conjugation	Unconjugated
Modification	Unmodified
Isotype	IgG
Clonality	Monoclonal
Form	Liquid
Concentration	
Storage	Aliquot and store at -20°C (valid for 12 months). Avoid freeze/thaw cycles.
Shipping	Ice bags
Buffer	Supplied in 50mM Tris-Glycine(pH 7.4), 0.15M NaCl, 40% Glycerol, 0.01% sodium azide and 0.05% protective protein. Stable for 12 months from date of receipt.
Purification	Affinity Purification

Application

Dilution Ratio	WB 1:2000-1:20000,IHC 1:200-1:500,ICC/IF 1:100-1:200,FC 1:200-1:2000
Molecular Weight	Calculated MW:77 kDa; Observed MW:100 kDa

Antigen Information

Gene Name	Nucleolin
Alternative Names	C23; Nsr1
Gene ID	4691
SwissProt ID	P19338
Immunogen	A synthetic peptide of human Nucleolin

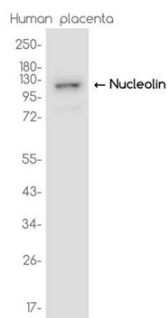
Background

Nucleolin (NCL), a eukaryotic nucleolar phosphoprotein, is involved in the synthesis and maturation of ribosomes. It is located mainly in dense fibrillar regions of the nucleolus. Human NCL gene consists of 14 exons with 13 introns and spans

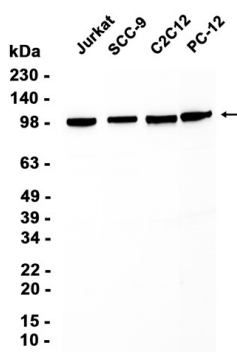
approximately 11kb. The intron 11 of the NCL gene encodes a small nucleolar RNA, termed U20. [provided by RefSeq, Jul 2008]

Research Area

Image Data



Western blot analysis of extracts from Human placenta tissue using Nucleolin Rabbit Monoclonal Antibody at 1:1000.



Western blot analysis of extracts from Jurkat, SCC-9, C2C12, PC-12 cells using AMRe86948 at 1:5000.