
Product Name: LSP1 Rabbit Monoclonal Antibody**Catalog #: AMRe86942**

For research use only.

Summary

Description	Recombinant rabbit monoclonal antibody
Host	Rabbit
Application	WB,IHC,ICC/IF,FC
Reactivity	Human,Mouse,Rat
Conjugation	Unconjugated
Modification	Unmodified
Isotype	IgG
Clonality	Monoclonal
Form	Liquid
Concentration	
Storage	Aliquot and store at -20°C (valid for 12 months). Avoid freeze/thaw cycles.
Shipping	Ice bags
Buffer	Supplied in 50mM Tris-Glycine(pH 7.4), 0.15M NaCl, 40% Glycerol, 0.01% sodium azide and 0.05% protective protein. Stable for 12 months from date of receipt.
Purification	Affinity Purification

Application

Dilution Ratio	WB 1:2000-1:20000,IHC 1:200-1:500,ICC/IF 1:100-1:200,FC 1:50-1:200
Molecular Weight	Calculated MW:37 kDa; Observed MW:52 kDa

Antigen Information

Gene Name	LSP1
Alternative Names	WP34; pp52
Gene ID	4046
SwissProt ID	P33241
Immunogen	A synthetic peptide of human LSP1

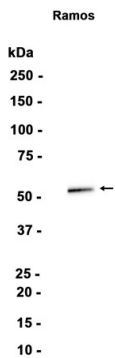
Background

This gene encodes an intracellular F-actin binding protein. The protein is expressed in lymphocytes, neutrophils, macrophages, and endothelium and may regulate neutrophil motility, adhesion to fibrinogen matrix proteins, and transendothelial migration.

Alternative splicing results in multiple transcript variants encoding different isoforms. [provided by RefSeq, Jul 2008]

Research Area

Image Data



Western blot analysis of extracts from Ramos cells using LSP1 Rabbit Monoclonal Antibody at 1:1000.