
Product Name: SP-C Rabbit Monoclonal Antibody**Catalog #: AMRe86938**

For research use only.

Summary

Description	Recombinant rabbit monoclonal antibody
Host	Rabbit
Application	WB,IHC,IP
Reactivity	Mouse
Conjugation	Unconjugated
Modification	Unmodified
Isotype	IgG
Clonality	Monoclonal
Form	Liquid
Concentration	
Storage	Aliquot and store at -20°C (valid for 12 months). Avoid freeze/thaw cycles.
Shipping	Ice bags
Buffer	Supplied in 50mM Tris-Glycine(pH 7.4), 0.15M NaCl, 40% Glycerol, 0.01% sodium azide and 0.05% protective protein. Stable for 12 months from date of receipt.
Purification	Affinity Purification

Application

Dilution Ratio	WB 1:500-1:2000,IHC 1:200-1:2000,IP 1:20-1:50
Molecular Weight	Calculated MW:21 kDa; Observed MW:21 kDa

Antigen Information

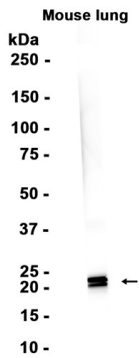
Gene Name	SP-C
Alternative Names	SP5; SPC; SP-C; Sftp2; Bricd6; Sftp-2; pro-SpC
Gene ID	20389
SwissProt ID	P21841
Immunogen	A synthetic peptide of mouse SP-C

Background

Pulmonary surfactant associated proteins promote alveolar stability by lowering the surface tension at the air-liquid interface in the peripheral air spaces.

Research Area

Image Data



Western blot analysis of extracts from Mouse lung tissue using SP-C Rabbit Monoclonal Antibody at 1:1000.