

Product Name: CELF-2 Rabbit Monoclonal Antibody**Catalog #: AMRe86936**

For research use only.

Summary

Description	Recombinant rabbit monoclonal antibody
Host	Rabbit
Application	WB,IHC,ICC/IF,FC,IP
Reactivity	Human,Mouse,Rat
Conjugation	Unconjugated
Modification	Unmodified
Isotype	IgG
Clonality	Monoclonal
Form	Liquid
Concentration	
Storage	Aliquot and store at -20°C (valid for 12 months). Avoid freeze/thaw cycles.
Shipping	Ice bags
Buffer	Supplied in 50mM Tris-Glycine(pH 7.4), 0.15M NaCl, 40% Glycerol, 0.01% sodium azide and 0.05% protective protein. Stable for 12 months from date of receipt.
Purification	Affinity Purification

Application

Dilution Ratio	WB 1:1000-1:5000,IHC 1:50-1:100,ICC/IF 1:200-1:500,FC 1:100-1:200,IP 1:50-1:100
Molecular Weight	Calculated MW:54 kDa; Observed MW:54 kDa

Antigen Information

Gene Name	CELF-2
Alternative Names	ETR3; ETR-3; NAPOR; CELF-2; CUGBP2; BRUNOL3; CUG-BP2
Gene ID	10659
SwissProt ID	O95319
Immunogen	Recombinant protein of human CELF-2

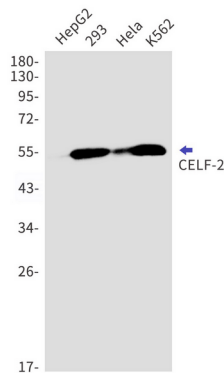
Background

Members of the CELF/BRUNOL protein family contain two N-terminal RNA recognition motif (RRM) domains, one C-terminal RRM domain, and a divergent segment of 160-230 aa between the second and third RRM domains. Members of this protein

family regulate pre-mRNA alternative splicing and may also be involved in mRNA editing, and translation. Alternative splicing results in multiple transcript variants encoding different isoforms. [provided by RefSeq, Jul 2008]

Research Area

Image Data



Western blot detection of CELF-2 in HepG2,293, HeLa,K562 cell lysates using CELF-2 antibody(1:1000 diluted).