

Product Name: SBDS Rabbit Monoclonal Antibody**Catalog #: AMRe86935**

For research use only.

Summary

Description	Recombinant rabbit monoclonal antibody
Host	Rabbit
Application	WB
Reactivity	Human, Mouse, Rat
Conjugation	Unconjugated
Modification	Unmodified
Isotype	IgG
Clonality	Monoclonal
Form	Liquid
Concentration	
Storage	Aliquot and store at -20°C (valid for 12 months). Avoid freeze/thaw cycles.
Shipping	Ice bags
Buffer	Supplied in 50mM Tris-Glycine(pH 7.4), 0.15M NaCl, 40% Glycerol, 0.01% sodium azide and 0.05% protective protein. Stable for 12 months from date of receipt.
Purification	Affinity Purification

Application

Dilution Ratio	WB 1:2000-1:20000
Molecular Weight	Calculated MW:29 kDa; Observed MW:29 kDa

Antigen Information

Gene Name	SBDS
Alternative Names	SDS; SWDS; CGI-97
Gene ID	51119
SwissProt ID	Q9Y3A5
Immunogen	A synthetic peptide of human SBDS

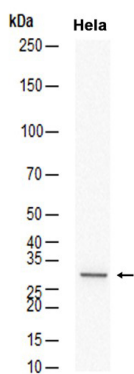
Background

This gene encodes a highly conserved protein that plays an essential role in ribosome biogenesis. The encoded protein interacts with elongation factor-like GTPase 1 to disassociate eukaryotic initiation factor 6 from the late cytoplasmic pre-60S

ribosomal subunit allowing assembly of the 80S subunit. Mutations within this gene are associated with the autosomal recessive disorder Shwachman-Bodian-Diamond syndrome. This gene has a closely linked pseudogene that is distally located. [provided by RefSeq, Jan 2017]

Research Area

Image Data



Western blot analysis of extracts from HeLa cells using SBDS Rabbit Monoclonal Antibody at 1:4000.