

Product Name: TMPRSS2 Rabbit Monoclonal Antibody**Catalog #: AMRe86929**

For research use only.

Summary

Description	Recombinant rabbit monoclonal antibody
Host	Rabbit
Application	WB,IHC
Reactivity	Human
Conjugation	Unconjugated
Modification	Unmodified
Isotype	IgG
Clonality	Monoclonal
Form	Liquid
Concentration	0.1mg/ml. The concentration of this product may be batch-dependent.
Storage	Aliquot and store at -20°C (valid for 12 months). Avoid freeze/thaw cycles.
Shipping	Ice bags
Buffer	Supplied in 50mM Tris-Glycine(pH 7.4), 0.15M NaCl, 40% Glycerol, 0.01% sodium azide and 0.05% protective protein. Stable for 12 months from date of receipt.
Purification	Affinity Purification

Application

Dilution Ratio	WB 1:1000-1:5000,IHC 1:500-1:2000
Molecular Weight	Calculated MW:54 kDa; Observed MW:54, 25 kDa

Antigen Information

Gene Name	TMPRSS2
Alternative Names	PP9284; PRSS10
Gene ID	7113
SwissProt ID	O15393
Immunogen	A synthetic peptide of human TMPRSS2

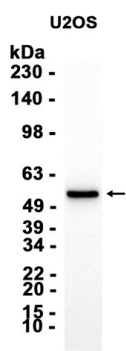
Background

This gene encodes a protein that belongs to the serine protease family. The encoded protein contains a type II transmembrane domain, a receptor class A domain, a scavenger receptor cysteine-rich domain and a protease domain. Serine proteases are

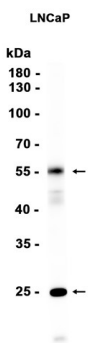
known to be involved in many physiological and pathological processes. This gene was demonstrated to be up-regulated by androgenic hormones in prostate cancer cells and down-regulated in androgen-independent prostate cancer tissue. The protease domain of this protein is thought to be cleaved and secreted into cell media after autocleavage. Alternatively spliced transcript variants encoding different isoforms have been found for this gene. [provided by RefSeq, Sep 2008]

Research Area

Image Data



Western blot analysis of extracts from U2OS cells using TMPRSS2 Rabbit Monoclonal Antibody at 1:1000.



Western blot analysis of extracts from LNCaP cells using AMRe86929 at 1:3000.