

Product Name: Lysophospholipase 1 Rabbit Monoclonal Antibody
Catalog #: AMRe86927

Summary

Production Name	Lysophospholipase 1 Rabbit Monoclonal Antibody
Description	Rabbit Monoclonal antibody
Host	Rabbit
Application	WB
Reactivity	Human,Mouse,Rat

Performance

Conjugation	Unconjugated
Modification	Unmodified
Isotype	IgG
Clonality	Monoclonal
Form	Liquid
Storage	Store at 4°C short term. Aliquot and store at -20°C long term. Avoid freeze/thaw cycles.
Buffer	Supplied in 50mM Tris-Glycine(pH 7.4), 0.15M NaCl, 40% Glycerol, 0.01% sodium azide and 0.05% BSA. Stable for 12 months from date of receipt.
Purification	Affinity Purification

Immunogen

Gene Name	Lysophospholipase 1
Alternative Names	APT1; LPL1; APT-1; LPL-I; hAPT1
Gene ID	10434
SwissProt ID	O75608.

Application

Dilution Ratio	WB: 1:2000-1:20000
Molecular Weight	Calculated MW:25 kDa; Observed MW:25 kDa

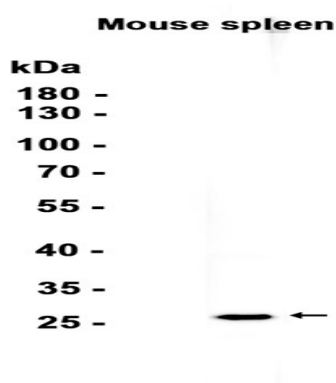
Product Name: Lysophospholipase 1 Rabbit Monoclonal Antibody
Catalog #: AMRe86927

Background

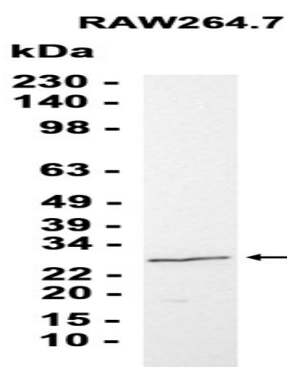
This gene encodes a member of the alpha/beta hydrolase superfamily. The encoded protein functions as a homodimer, exhibiting both depalmitoylating as well as lysophospholipase activity, and may be involved in Ras localization and signaling. Alternate splicing results in multiple transcript variants. Pseudogenes of this gene have been defined on chromosomes 4, 6, and 7. [provided by RefSeq, Jul 2013]

Research Area

Image Data



Western blot analysis of extracts from Mouse spleen tissue using AMRe86927 at 1:1000.



Western blot analysis of extracts from RAW264.7 cells using AMRe86927 at 1:5000.

Note

For research use only.