
Product Name: Cubilin Rabbit Monoclonal Antibody**Catalog #: AMRe86924**

For research use only.

Summary

Description	Recombinant rabbit monoclonal antibody
Host	Rabbit
Application	WB,IHC
Reactivity	Human
Conjugation	Unconjugated
Modification	Unmodified
Isotype	IgG
Clonality	Monoclonal
Form	Liquid
Concentration	
Storage	Aliquot and store at -20°C (valid for 12 months). Avoid freeze/thaw cycles.
Shipping	Ice bags
Buffer	Supplied in 50mM Tris-Glycine(pH 7.4), 0.15M NaCl, 40% Glycerol, 0.01% sodium azide and 0.05% protective protein. Stable for 12 months from date of receipt.
Purification	Affinity Purification

Application

Dilution Ratio	WB 1:2000-1:20000,IHC 1:200-1:500
Molecular Weight	Calculated MW:399 kDa; Observed MW:399 kDa

Antigen Information

Gene Name	Cubilin
Alternative Names	IFCR; MGA1; gp280
Gene ID	8029
SwissProt ID	O60494
Immunogen	A synthetic peptide of human Cubilin

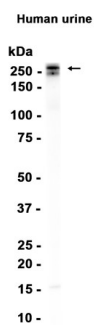
Background

Cubilin (CUBN) acts as a receptor for intrinsic factor-vitamin B12 complexes. The role of receptor is supported by the presence of 27 CUB domains. Cubulin is located within the epithelium of intestine and kidney. Mutations in CUBN may play a role in

autosomal recessive megaloblastic anemia. [provided by RefSeq, Jul 2008]

Research Area

Image Data



Western blot analysis of extracts from Human urine tissue using Cubilin Rabbit Monoclonal Antibody at 1:1000.