

---

**Product Name: PPAR gamma Rabbit Monoclonal Antibody****Catalog #: AMRe86915**

For research use only.

**Summary**

<b>Description</b>	Recombinant rabbit monoclonal antibody
<b>Host</b>	Rabbit
<b>Application</b>	WB,ICC/IF,FC
<b>Reactivity</b>	Human
<b>Conjugation</b>	Unconjugated
<b>Modification</b>	Unmodified
<b>Isotype</b>	IgG
<b>Clonality</b>	Monoclonal
<b>Form</b>	Liquid
<b>Concentration</b>	
<b>Storage</b>	Aliquot and store at -20°C (valid for 12 months). Avoid freeze/thaw cycles.
<b>Shipping</b>	Ice bags
<b>Buffer</b>	Supplied in 50mM Tris-Glycine(pH 7.4), 0.15M NaCl, 40% Glycerol, 0.01% sodium azide and 0.05% protective protein. Stable for 12 months from date of receipt.
<b>Purification</b>	Affinity Purification

**Application**

<b>Dilution Ratio</b>	WB 1:500-1:2000,ICC/IF 1:100-1:200,FC 1:200-1:1000
<b>Molecular Weight</b>	Calculated MW:58 kDa; Observed MW:58 kDa

**Antigen Information**

<b>Gene Name</b>	PPAR gamma
<b>Alternative Names</b>	GLM1; CIMT1; NR1C3; PPARG1; PPARG2; PPARgamma
<b>Gene ID</b>	5468
<b>SwissProt ID</b>	P37231
<b>Immunogen</b>	A synthetic peptide of human PPAR gamma

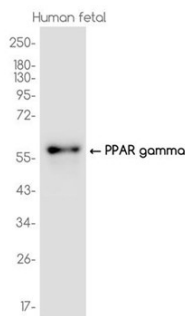
**Background**

This gene encodes a member of the peroxisome proliferator-activated receptor (PPAR) subfamily of nuclear receptors. PPARs form heterodimers with retinoid X receptors (RXRs) and these heterodimers regulate transcription of various genes. Three

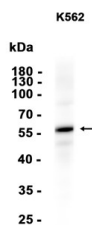
subtypes of PPARs are known: PPAR-alpha, PPAR-delta, and PPAR-gamma. The protein encoded by this gene is PPAR-gamma and is a regulator of adipocyte differentiation. Additionally, PPAR-gamma has been implicated in the pathology of numerous diseases including obesity, diabetes, atherosclerosis and cancer. Alternatively spliced transcript variants that encode different isoforms have been described. [provided by RefSeq, Jul 2008]

## Research Area

## Image Data



Western blot analysis of extracts from Human fetal tissue using PPAR gamma Rabbit Monoclonal Antibody at 1:1000.



Western blot analysis of extracts from K562 cells using AMRe86915 at 1:1000.